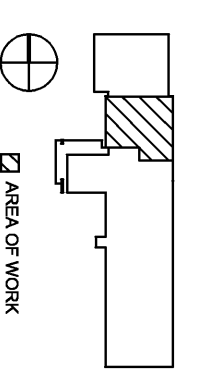


KEY PLAN



AREA OF WORK

Professional Certification: I hereby certify that these documents were prepared or approved by me, and that I am a duly licensed professional engineer under the laws of the State of Maryland, License No. ZZ414
Expiration Date: 7/18/2010

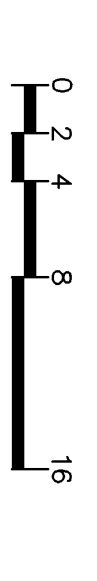
Seal

No.	Date:	Revision:
2009.06.12	Permit 1	Bid
2009.06.19	Bid Set	

Drawing Title:
DEMOLITION AND CONSTRUCTION PLANS - ELECTRICAL

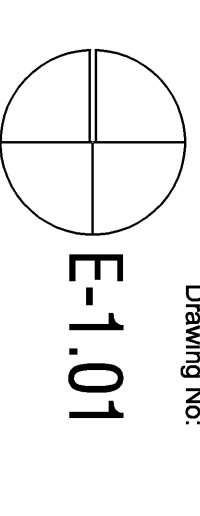
Phase 1A

Graphic Scale: 1/8" = 1'-0"



Drawn By: DAW
Checked By: SGH

Project No.: 2009.06.12
Date: 07/10/09
Drawing No.: E-1.01



E-1.01

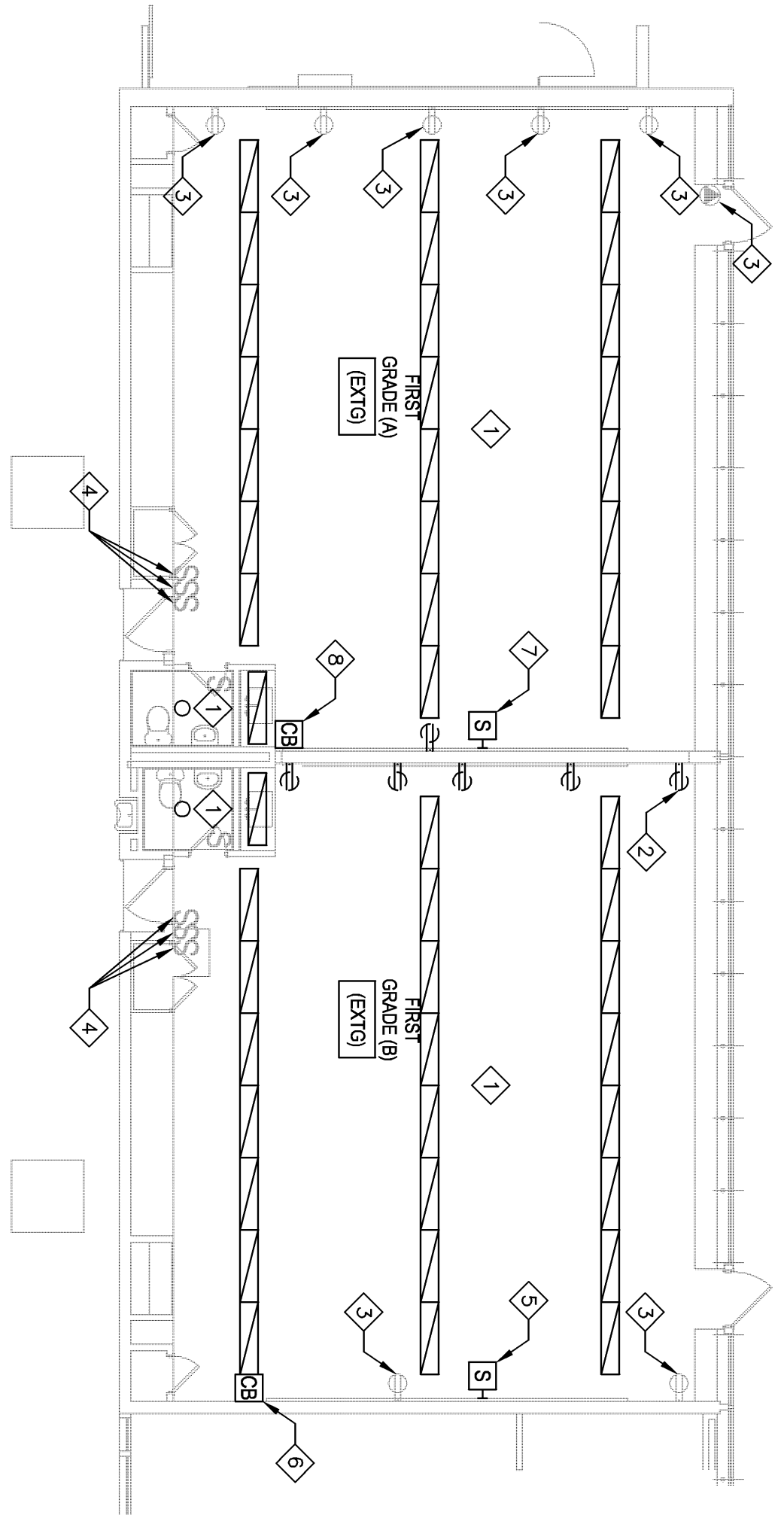
FXIT. ID	MANUFACTURER/CAT. NO.	WATT	LAMP TYPE	MTG. AFF.	MTG. HT.	LENGTH	REMARKS
A	LEDALITE #8816H01SM1611EW	1-54	FL	P	9'-0"	AS INDICATED	
AE	LEDALITE #8816H01SM1611EW	1-54	FL	P	9'-0"	AS INDICATED	PROVIDE BATTERY BACKUP BALLAST FOR ONE LAMP.
B	COOPER #SLX70RWHSD	LED	LED	S	CEILING	N/A	
C	LIGHTOLIER #8021CWCLW/S6132BUES	1-26	FL	R	9'-0"	N/A	
D	LIGHTOLIER HELIOS #S412WH	1-18	CFL	S	WALL	2'	MOUNT FIXTURE 6" ABOVE MIRROR.

LIGHTING FIXTURE SCHEDULE

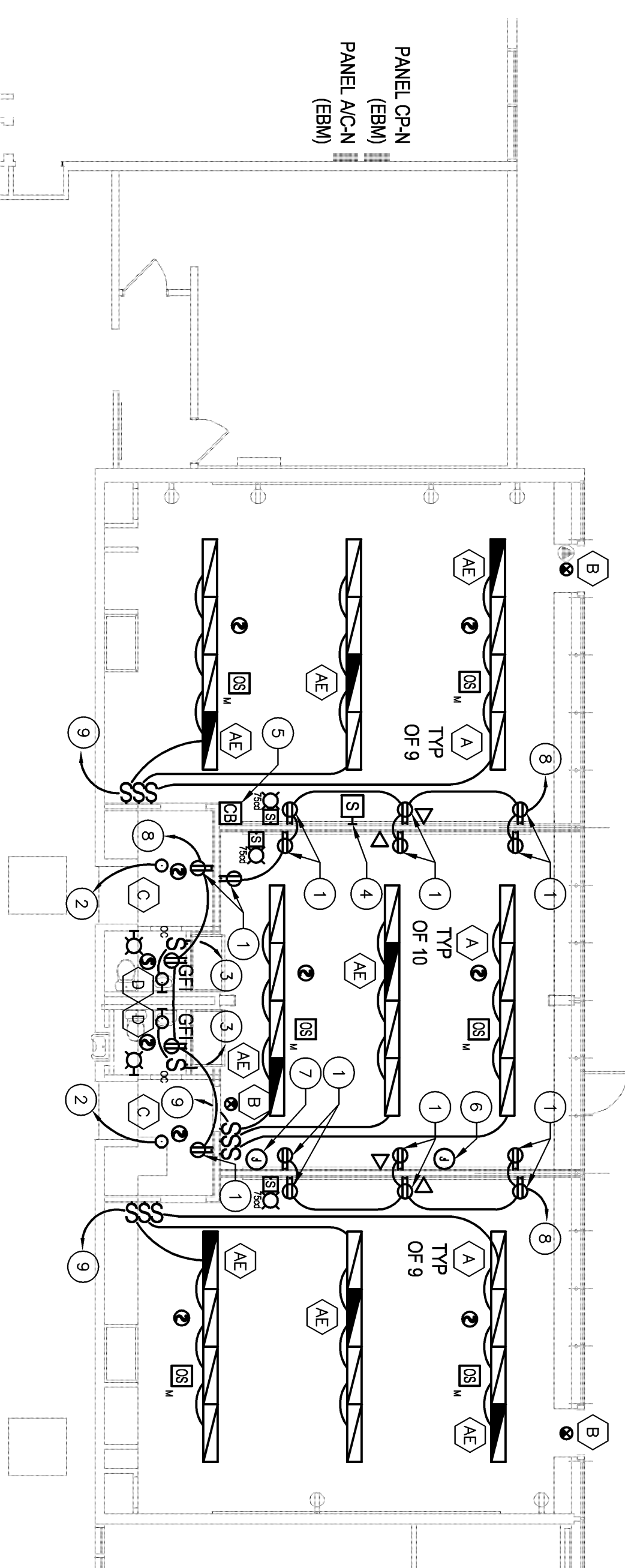
LIGHTING FIXTURE SCHEDULE GENERAL NOTES:

- L1. DESIGNATION USED IN SCHEDULE ARE AS FOLLOWS:
CFL - COMPACT FLUORESCENT
FL - FLUORESCENT
P - PENDANT
R - RECESSED SURFACE
S - SURFACE
W - WAITS
- L2. FIXTURES IN FIXTURE SCHEDULE TO BE RELOCATED MUST BE SUSPENDED WITH SINGLE STEEL HANGERS. HANGERS SHALL HAVE SUITABLE MEANS FOR VERTICAL ADJUSTMENT AND BUILT-IN POSITIVE HORIZONTAL LEVELING PROVISIONS.
- L3. ALL FIXTURES USING FLUORESCENT TYPE LAMPS INCLUDING COMPACT TYPE SHALL HAVE HIGH POWER FACTOR LOW HARMONIC DISTORTION (<10%THD) PROGRAMMED START TYPE BALLASTS.
- L4. FOR EXACT MOUNTING HEIGHT AND LOCATION REFER TO ARCHITECTURAL DRAWINGS.
- L5. DARKENED PORTION OF EXIT LIGHT SYMBOL DENOTES LIGHTED FACE SIDE(S). FIXTURE SHALL BE CEILING, END OR WALL MOUNTED AND HAVE DIRECTIONAL ARROWS AS SHOWN ON DRAWINGS.
- L6. ALL FLUORESCENT FIXTURES, SHALL HAVE ELECTRONIC PROGRAMMED START BALLAST(S) (ADVANCE OSRAM/SYLVANIA, UNIVERSAL LIGHTING TECHNOLOGIES). ALL LAMPS SHALL BE T8 32 WATT (PHILLIPS F32T8/TL735 OR EQUAL BY OSRAM/SYLVANIA OR GE) W/ COLOR TEMP. 3500 DEG. KELVIN.
- L7. ALL LIGHTING FIXTURES SHALL BE INSTALLED IN STRICT ACCORDANCE WITH N.E.C. SECTION 314.23 AND 410.16, AND SHALL PROPERLY AND SUITABLY SUPPORT THE WEIGHT OF THE FIXTURES INSTALLED.
- L8. PROVIDE UNSWITCHED HOT CONDUCTOR TO EMERGENCY BALLAST IN FIXTURES INDICATED TO HAVE AN EMERGENCY BALLAST.
- L9. REGARDLESS OF CATALOG NUMBER IN LIGHTING FIXTURE SCHEDULE, EVERY FIXTURE SHALL BE OF THE TYPE FOR CEILING CONSTRUCTION IN OR ON WHICH IT IS TO BE INSTALLED. IT SHALL BE THE ELECTRICAL CONTRACTOR'S RESPONSIBILITY TO COORDINATE THIS WITH THE ARCHITECT'S FINISH SCHEDULES.
- L10. ALL RECESSED FIXTURES MOUNTED IN DRYWALL OR PLASTER CEILING SHALL BE COMPLETE WITH A SUITABLE PLASTER FRAME OR TRIM RING. ALL FIXTURES SHALL BE MOUNTED ON OR IN CEILING IN ACCORDANCE WITH PUBLISHED RECOMMENDATIONS OF THE MANUFACTURERS, USING BAR OR SWINGWAY HANGERS, ETC. THESE ITEMS SHALL BE FURNISHED AS PART OF THE FIXTURE, WHETHER CALLED FOR BY CATALOG NUMBER OR NOT.
- L11. ALL FIXTURES INSTALLED IN SUSPENDED CEILING MUST BE SUPPORTED FROM THE BUILDING STRUCTURE DIRECTLY. IF WIRE IS USED FOR THIS PURPOSE, NO LESS THAN 2 SEPARATE WIRES OF SIZES NO. 12 (OR LARGER) STEEL MUST BE USED. THESE WIRES MUST EXTEND FROM OPPOSITE CORNERS OF THE FIXTURE WITH EACH WIRE INDEPENDENTLY ATTACHED TO THE BUILDING STRUCTURE.
- L12. PROVIDE UNSWITCHED HOT CONDUCTOR TO ALL EXIT SIGNS.

NOTE:
SEE ARCHITECTURAL INTERIOR ELEVATIONS, FLOOR PLANS, AND / OR REFLECTED CEILING PLANS, (AS APPROPRIATE) FOR SPECIFIC LOCATIONS OF PANELS, FIXTURES, CONTROLS, OUTLETS, SWITCHES, DRAINS, DEVICES, DIFFUSERS, ETC. ANY LOCATIONS SHOWN FOR THESE OR SIMILAR ITEMS ON THE ARCHITECTURAL DRAWINGS SHALL TAKE PRECEDENCE OVER LOCATIONS SHOWN ON THE MECHANICAL, PLUMBING, OR ELECTRICAL DRAWINGS. CONTACT THE ARCHITECT FOR EXACT LOCATIONS OF ANY VISIBLE ITEMS INDICATED ON THE MECHANICAL, PLUMBING, OR ELECTRICAL DRAWINGS THAT ARE NOT SPECIFICALLY SHOWN ON THE ARCHITECTURAL INTERIOR ELEVATIONS, FLOOR PLANS, AND / OR REFLECTED CEILING PLANS. THE LOCATION OF ALL SUCH MECHANICAL, PLUMBING, OR ELECTRICAL DEVICES SHOULD BE COORDINATED/CONFIRMED WITH THE ARCHITECT PRIOR TO ROUGH-IN.



1 DEMOLITION PLAN - ELECTRICAL
Scale: 1/8" = 1'-0"



2 CONSTRUCTION PLAN - ELECTRICAL
Scale: 1/8" = 1'-0"

DEMO NOTES:

- DISCONNECT AND REMOVE EXISTING LIGHT FIXTURE(S). REMOVE ASSOCIATED CONDUIT AND WIRING. EXISTING CIRCUIT TO PANELBOARD TO BE REUSED TO POWER NEW FIXTURES.
- REMOVE ALL DEVICES AND ASSOCIATED CONDUIT AND WIRING FROM WALL.
- EXISTING RECEPTACLE TO REMAIN.
- DISCONNECT AND REMOVE EXISTING TOGGLE SWITCH(S). REMOVE ASSOCIATED BACKBOX, CONDUIT AND WIRING.
- EXISTING SPEAKER TO REMAIN.
- EXISTING CALL BUTTON TO REMAIN.
- DISCONNECT EXISTING SPEAKER. RELOCATE AS INDICATED. EXTEND EXISTING CABLING TO NEW LOCATION. RECONNECT TO MATCH EXISTING.
- DISCONNECT EXISTING CALL BUTTON. RELOCATED AS INDICATED. EXTEND EXISTING CABLING TO NEW LOCATION. RECONNECT TO MATCH EXISTING.

POWER NOTES:

- VERIFY EXACT LOCATIONS OF RECEPTACLES WITH ARCHITECT.
- CONNECT TO EXISTING CORRIDOR LIGHTING CIRCUIT WITH (2)#12, (1)#12G IN 3/4"C.
- CONNECT TO EXISTING LIGHTING CIRCUIT IN THIS SPACE WITH (2)#12, (1)#12G IN 3/4"C.
- RELOCATED SPEAKER. COORDINATE FINAL LOCATION WITH ARCHITECT.
- RELOCATED CALL BUTTON. COORDINATE FINAL LOCATION WITH ARCHITECT.
- PROVIDE RECESSED SINGLE GANG BOX WITH BLANK COVERPLATE AND 3/4" CONDUIT STUBBED UP TO ABOVE CEILING FOR FUTURE SPEAKER. COORDINATE FINAL LOCATION WITH ARCHITECT.
- FURNISH A 20A-1P, TYPE COB BREAKER AND INSTALL IN EXISTING SQUARE D NOOD PANELBOARD "CP-N." CONNECT RECEPTACLES TO THIS CIRCUIT WITH (2)#10, (1)#10G IN 3/4"C.
- CONNECT TO EXISTING LIGHTING CIRCUIT IN THIS SPACE VIA OCCUPANCY SENSOR POWER SUPPLY WITH (2)#12, (1)#12G IN 3/4"C.
- CONNECT WALL BOX OCCUPANCY SENSOR IN EACH BATHROOM TO ASSOCIATED EXHAUST FAN WITH (2)#12, (1)#12G IN 3/4"C.