

GRACE EPISCOPAL DAY SCHOOL

9411 CONNECTICUT AVENUE
KENSINGTON MARYLAND 20895

cox graae + spack architects

2909 M Street NW
Washington DC 20007
202-965-7070
fax 202-965-7144

a. morton thomas & associates
civil engineers

12750 Twinbrook Parkway
1 Rockville, MD 20852
Telephone: 301 994 2522
Facsimile: 301 994 0814

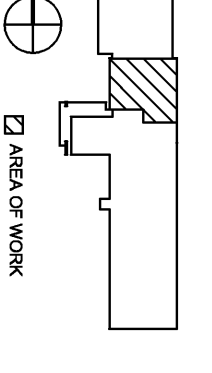
linton engineering
structural engineers

46090 Lake Center Plaza, 1 Suite 309
Pomona Falls, VA, 20165
Telephone: 571 323 0320
Facsimile: 571 323 0689

century engineering
m.e.p. engineers

200 Airport Road, Capital City Airport
New Cumberland, PA, 17070
Telephone: 717 901 7055
Facsimile: 717 901 7059

KEY PLAN



AREA OF WORK

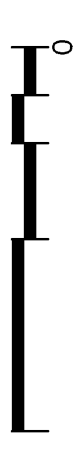
Professional Certification: I hereby certify that these documents were prepared or approved by me, and that I am a duly licensed professional engineer under the laws of the State of Maryland, License No. 20350
Expiration Date: 2/14/2010

Seal

No.	Date:	Revision:
	2009.06.12	Permit 1 BID
	2009.06.19	Bid Set
Drawing Title:		

PARTIAL FLOOR PLAN - PLUMBING
Phase 1A

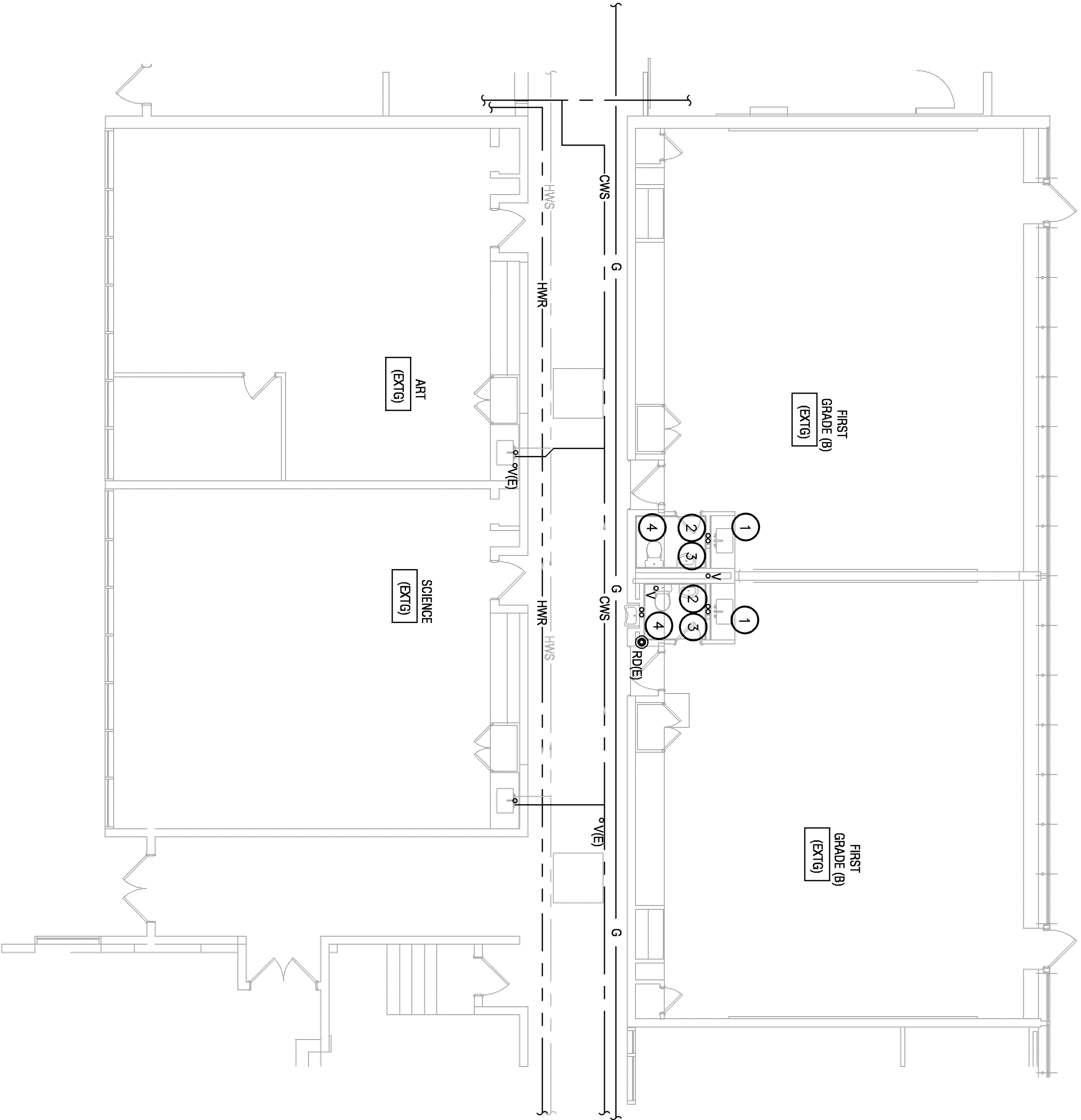
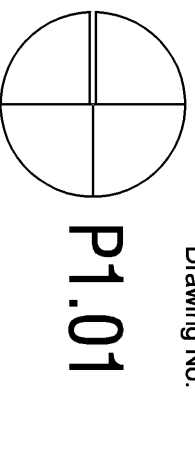
Graphic Scale: 1/8" = 1'-0"



Drawn By: DT
Checked By: CJ

Project No.: 071085.00
Date: 2009.06.12

Drawing No.: P1.01



1 PARTIAL FLOOR PLAN DEMOLITION - PLUMBING
P1.01 Scale: 1/8" = 1'-0"

GENERAL NOTES:

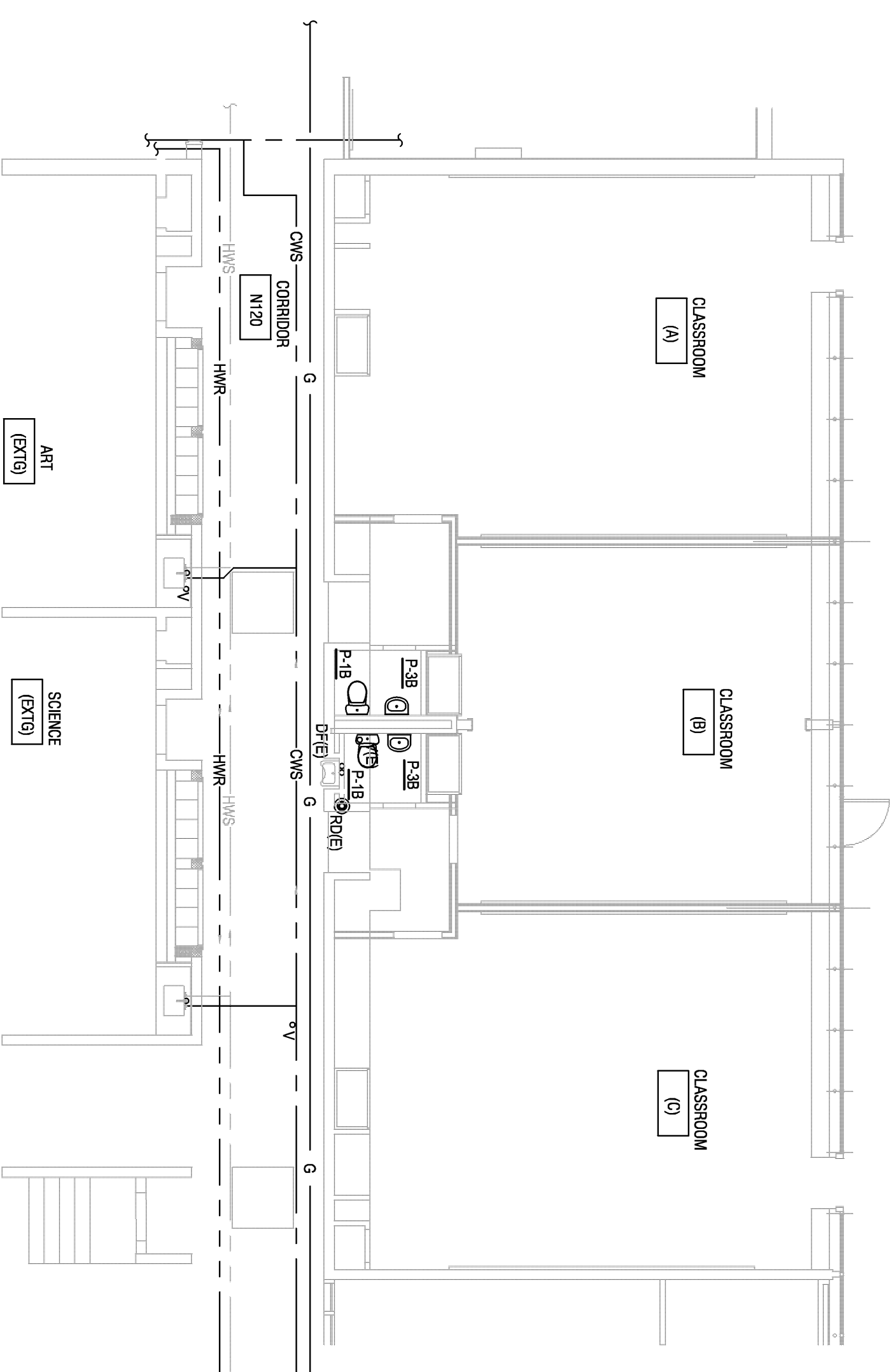
1. PATCH ALL OPENINGS IN WALLS AFTER PIPING HAS BEEN REMOVED
2. COVER EXISTING AND NEW FLOOR DRAINS TO PROTECT FROM DEBRIS.

PLUMBING FIXTURE SCHEDULE							REMARKS
ITEM	DESCRIPTION	LOCATION	WASTE	VENT	H.W.	C.W.	
P-1B	WATER CLOSET	---	4"	2"	---	1-1/4"	FLOOR MOUNTED FLUSH VALVE
P-3C	LAVATORY	---	1-1/2"	1-1/4"	1/2"	1/2"	WALL HUNG - CONNECT TO EXISTING SERVICE

2 PARTIAL FLOOR PLAN NEW CONSTRUCTION - PLUMBING
P1.01 Scale: 1/8" = 1'-0"

DRAWING REFERENCE NOTES:

1. DISCONNECT AND REMOVE SINK.
2. REMOVE EXISTING WASTE AND VENT PIPING - PLUG WASTE GAS TIGHT MINIMUM 2" BELOW FINISH FLOOR.
3. LOCATE HOT & COLD WATER PIPING ABOVE CEILING. - REMOVE PIPING BACK TO MAIN & CAP.
4. REMOVE EXISTING WATER CLOSETS AND SINKS FROM BOTH BATHROOMS AND RETAIN PIPING CONNECTIONS FOR NEW FIXTURES.



Note: See Architectural Interior Elevations, Floor Plans, and / or Reflected Ceiling Plans (as appropriate) for specific locations of panels, fixtures, controls, outlets, switches, drains, devices, diffusers, etc. Any locations shown for these or similar items on the Architectural drawings shall take precedence over locations shown on the mechanical, plumbing, or electrical drawings. Contact the Architect for exact locations of any visible items indicated on the mechanical, plumbing, or electrical drawings that are not specifically shown on the Architectural Interior Elevations, Floor Plans, and / or Reflected Ceiling Plans. The location of all such mechanical, plumbing, or electrical devices should be coordinated/confirmed with the Architect prior to rough-in.