

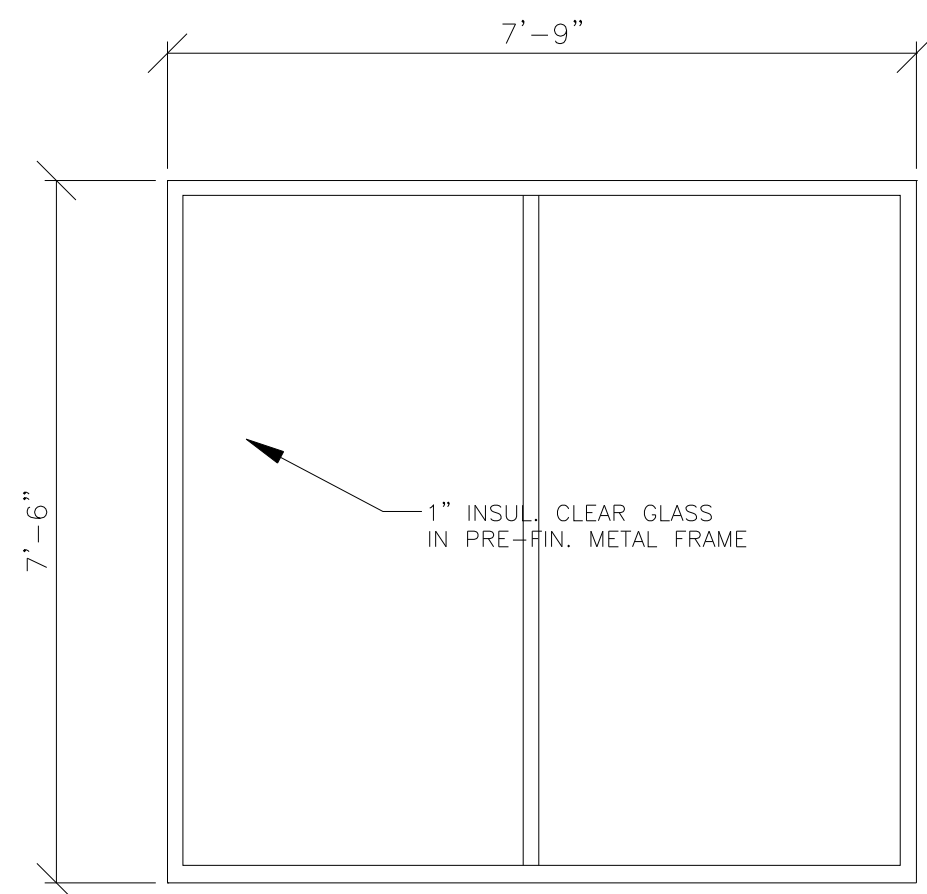
STOREFRONT - D

STOREFRONT - C

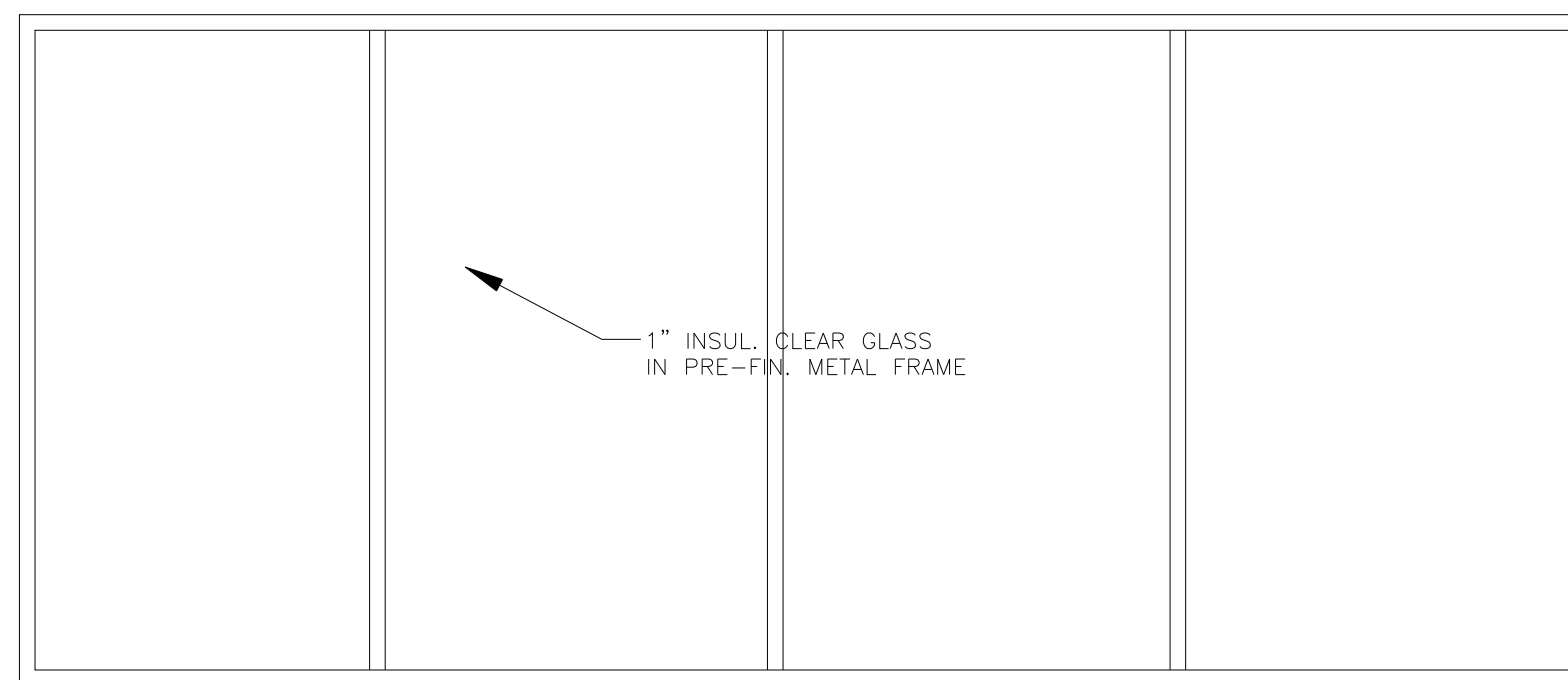
STOREFRONT - B

STOREFRONT - A

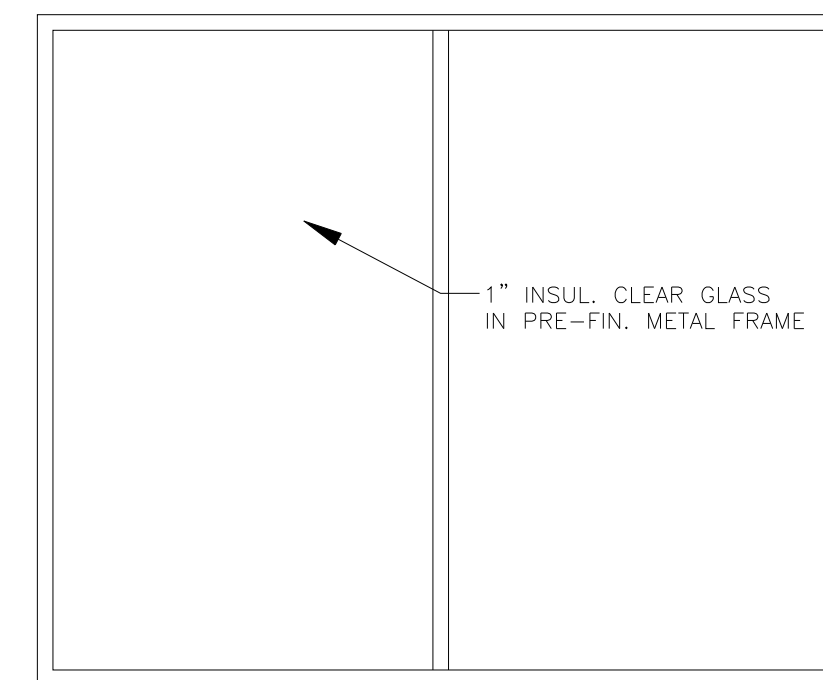
ALL STOREFRONT FIXED GLASS FRAMING SHALL BE KAWNEER 451 SYSTEM WITH ONE-INCH THICK INSULATING GLASS. ALL FRAMING SHALL BE FINISHED WITH FLUOROPON ARCHITECTURAL COATING. (COLOR BY OWNER)  
CONTRACTOR TO FIELD VERIFY ALL OPENINGS PRIOR TO FABRICATION OF FRAMES.



STOREFRONT - G

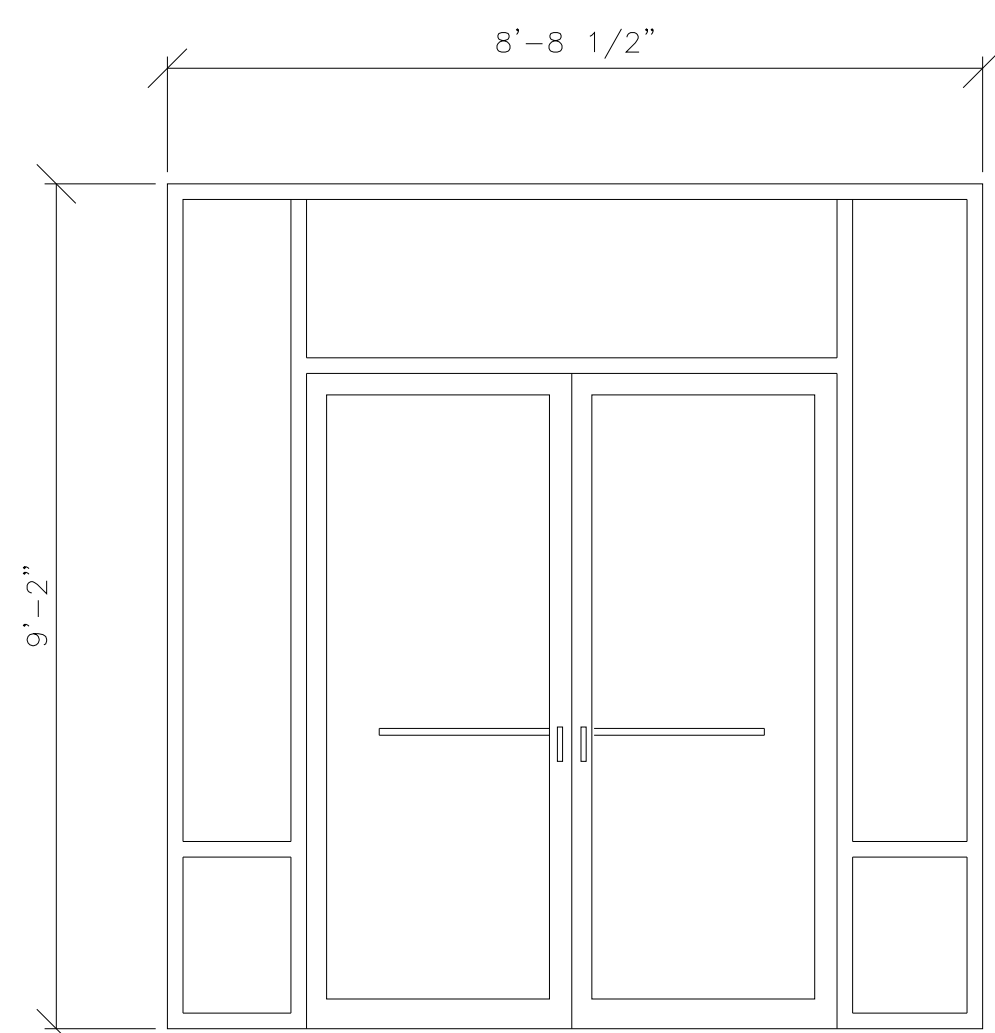


STOREFRONT - F

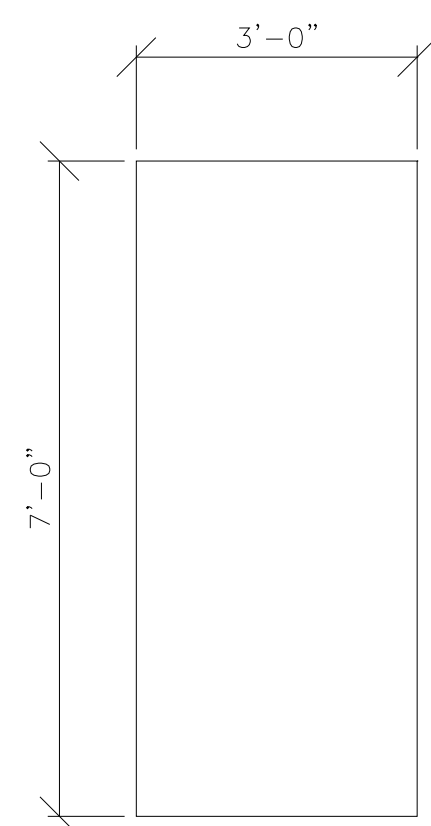


STOREFRONT - E

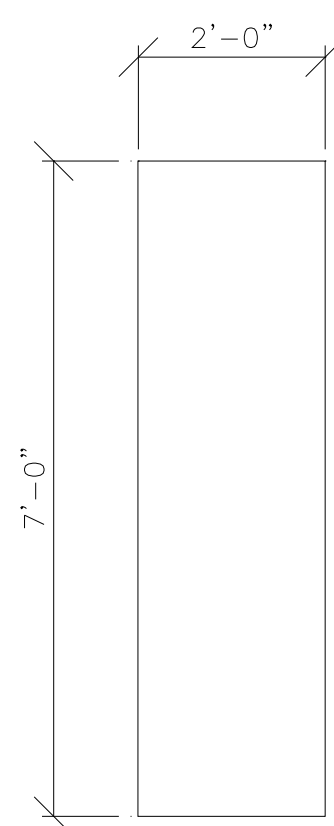
STOREFRONT ELEVATIONS



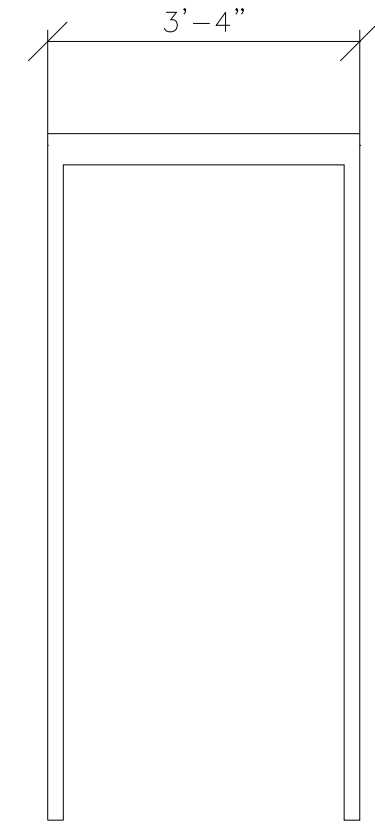
1



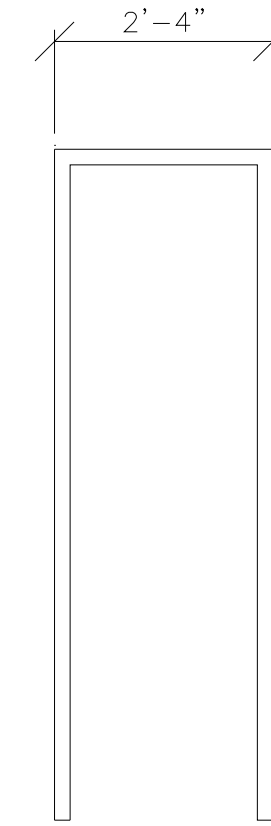
2



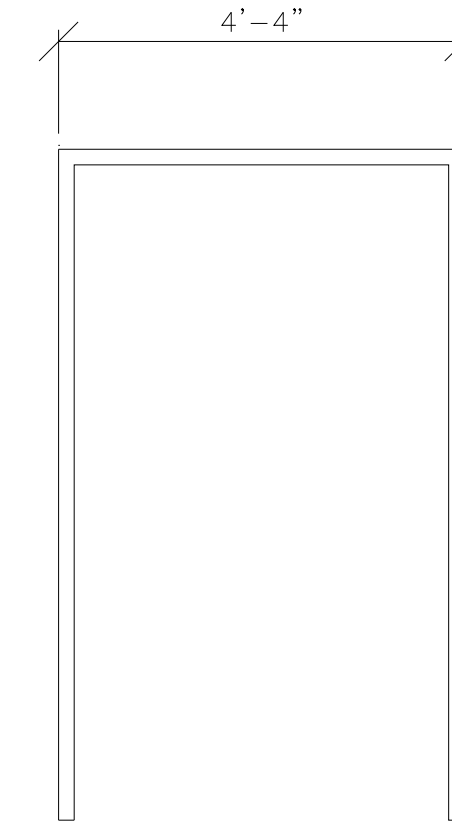
3



F-2  
AT CMU WALL

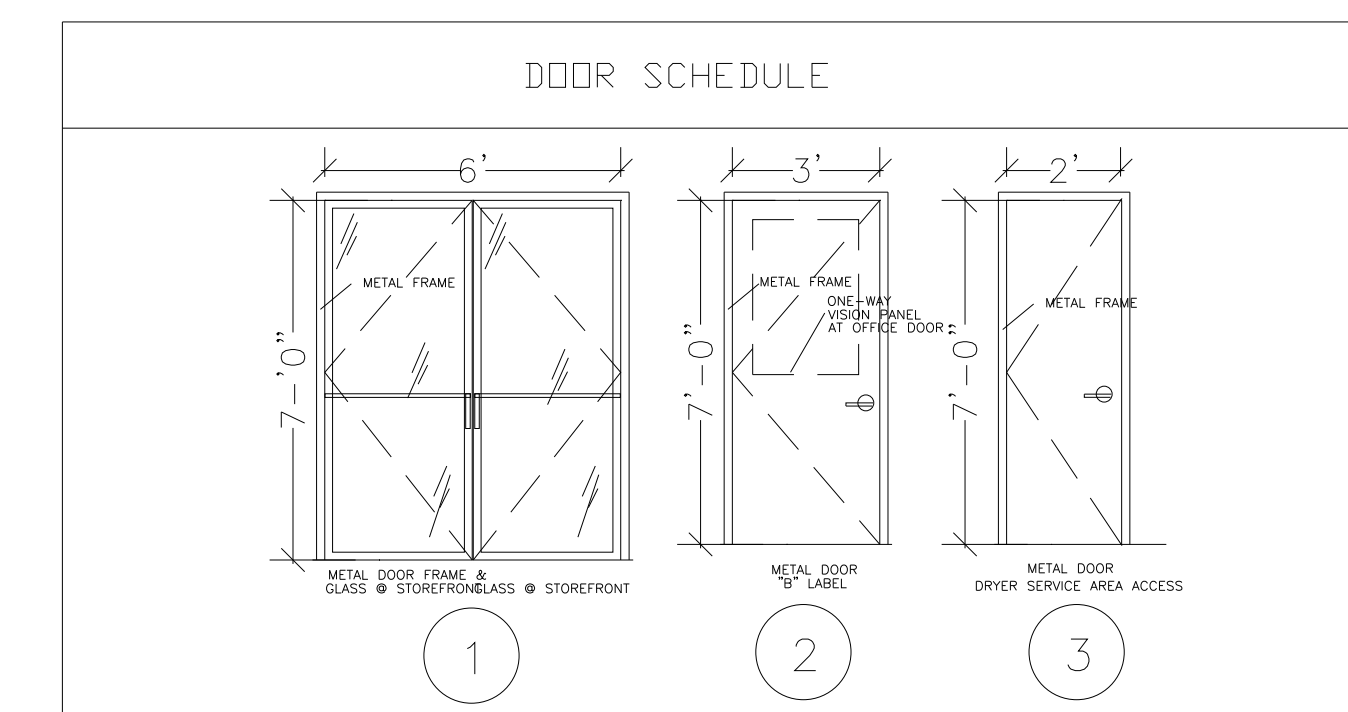


F-3



F-4

DOOR / FRAME ELEVATIONS



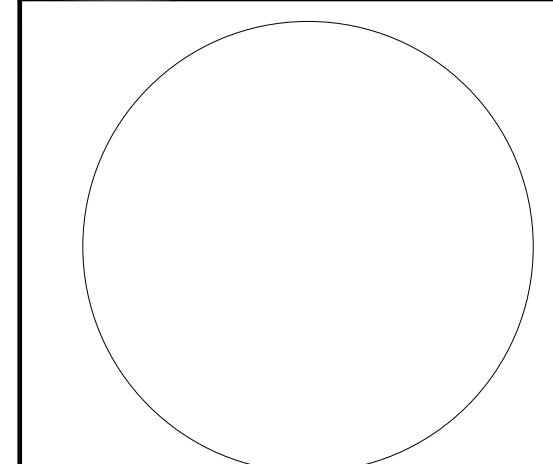
DOOR NOTES

EXIT DOOR SHALL BE OPERABLE WITHOUT THE USE OF KEYS, SPECIAL KNOWLEDGE OR EFFORT.  
ALL DOORS SHALL HAVE A MINIMUM CLEAR OPENING WIDTH OF 32".  
ALL DOOR LATCHES SHALL BE EQUIPPED WITH LEVER-TYPE HANDLES OR PANIC BARS.  
DOOR OPENING HARDWARE SHALL BE MOUNTED BETWEEN 30 & 44 INCHES ABOVE FINISH FLOOR.  
FLOOR AREAS AT EACH SIDE OF ALL DOORS SHALL BE CLEAR AND LEVEL. MAXIMUM THRESHOLD HEIGHT SHALL BE 1/2".

**ARCHITECTS**

**RAOUL LISSABET A.I.A.**  
ARCHITECTS / PLANNERS / DESIGN - BUILD

19021 SEDLEY TERRACE  
GAITHERSBURG, MARYLAND 20879  
Tel: (301) 948-3197 / Fax: (301) 990-4169



Copyright RAOUL LISSABET A.I.A., 2009

Issue Date:

Revisions

No.	Date	Description
1		
2		

PERMIT SET  
OCT. 15, 2009

**TROPICANA LAUNDROMAT**  
LAUNDROMAT FIT-UP PLANS  
8010 FENTON STREET  
SILVER SPRING MD, 20910

Project Number: Drawn By:

Designed By: Checked By:

Sheet Title:  
**STOREFRONT & DOOR SCHEDULE**

Sheet Number:  
**A-6**