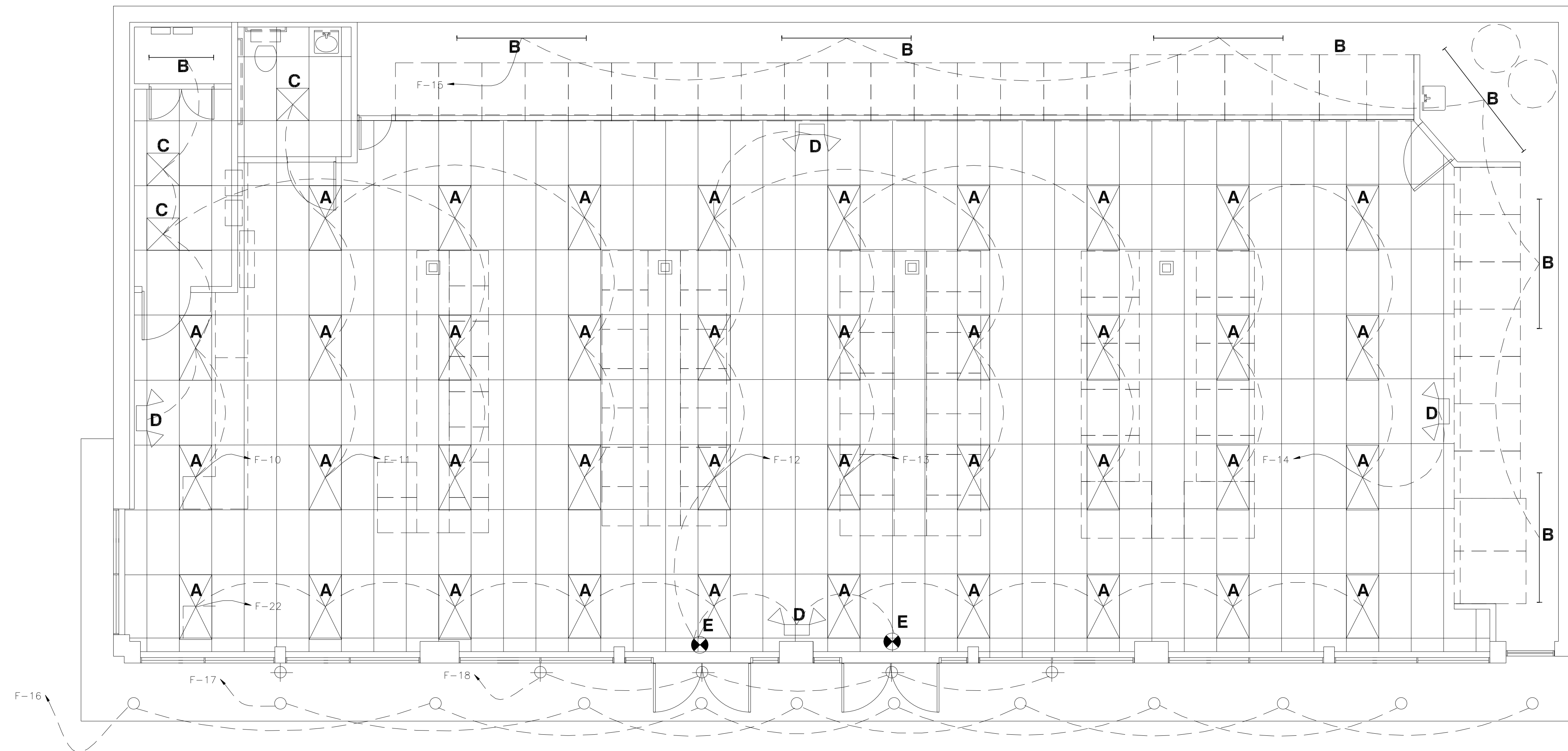


SYMBOLS LEGEND

- LIGHTING FIXTURE (SEE SCHEDULE FOR TYPE AND DESCRIPTION); LETTER OR NUMBER INDICATES TYPE.
- LIGHTING FIXTURE ON EMERGENCY CIRCUIT OR WITH EMERGENCY BATTERY BACK-UP (SEE SCHEDULE FOR TYPE AND DESCRIPTION); LETTER OR NUMBER INDICATES TYPE.
- PHOTOELECTRIC CELL
- EXIT LIGHT TO MATCH BUILDING STANDARD
- EMERGENCY LIGHT W/BATTERY BACK-UP
- SINGLE POLE SWITCH MOUNTED 48" AFF., UDN.
- 3-WAY TOGGLE SWITCH MOUNTED 48" AFF., UDN.
- PANELBOARD
- DISCONNECT SWITCH SIZE AS REQUIRED TO BE FUSED UNLESS OTHERWISE NOTED
- COMBINATION DISCONNECT SWITCH SIZE AS REQUIRED TO BE FUSED UNLESS OTHERWISE NOTED
- HEATING ELEMENT CONNECTION
- MOTOR CONNECTION
- FAN CONNECTION
- JUNCTION BOX MOUNT AS SHOWN ON PLANS, SIZE AS REQUIRED
- BRANCH CIRCUIT WIRING CONCEALED IN CEILING AND/OR WALL SPACES
- BRANCH CIRCUIT WIRING CONCEALED IN SLAB OR UNDERGROUND
- BRANCH CIRCUIT HOMERUN TO PANELBOARD; NUMBER OF ARROWS DENOTE NUMBER OF CIRCUITS; NUMBER OF HASHMARKS DENOTE NUMBER OF WIRES WHEN MORE THAN TWO
- CONDUIT UP
- CONDUIT DOWN
- GROUND AS PER LOCAL AND NATIONAL CODES
- SPECIAL OUTLET - COORDINATE OUTLET CONFIGURATION AND REQUIREMENT WITH EQUIPMENT MANUFACTURER
- DUPLEX RECEPTACLE 120 VOLTS, 20 AMPS, UP 18" AFF., UDN
- QUAD RECEPTACLE 120 VOLTS, 20 AMPS, UP 18" AFF., UDN
- QUAD RECEPTACLE 120 VOLTS, 20 AMPS, UP 18" AFF., UDN, W/ISOLATED GROUND
- DUPLEX RECEPTACLE 120 VOLTS, 20 AMPS, UP 18" AFF., UDN, GFI TYPE
- DUPLEX RECEPTACLE 120 VOLTS, 20 AMPS, UP 18" AFF., UDN, W/ ISOLATED GROUND
- TELEPHONE OUTLET MOUNTED 84" AFF., UDN, WITH 3/4" CC, W/ PULLWIRE, EXTEND TO ABOVE FINISHED CEILING
- COMBINATION DATA/TELEPHONE OUTLET MOUNTED 84" AFF., UDN, WITH 1" CC, W/ PULLWIRE, EXTEND TO ABOVE FINISHED CEILING
- PLAN NOTE DESIGNATION
- RISER DIAGRAM NOTE DESIGNATION



FLOOR PLAN - LIGHTING  
1/4"=1'-0"

LIGHTING FIXTURE SCHEDULE								
FIX. No.	DESCRIPTION	MANUFACTURER	MODEL No.	LAMP		VOLTS	MOUNTING	REMARKS
				No.	WATTAGE			
A	2X4 TROFFER	LITHONIA	GT3MV	3	32W	120	RECESS	
B	8 FT FLOOR STRIP FIXTURE	LITHONIA	C29675W	2	75W	120	PENDENT	
C	2X2 TROFFER	LITHONIA	GT3MV	2	17W	120	RECESS	
D	EMER. LIGHT W/ BATTERY PACK	LITHONIA	EU2M6	1	5.4W	120	SURFACE	
E	EXIT LIGHT	LITHONIA	EXRM6	1	3.8W	120	SURFACE	

LIGHTING ALLOWANCE PER 2006 IECC - SEC. 505.5.2 & 505.6.2  
 INTERIOR: REQUIRED PER CODE (15 WATTS / SQ. FT.) 3,800 SQ. FT. X 15 = 5,700 WATTS (MAX) PROVIDED: 1,175 WATTS

EXHAUST FAN SCHEDULE								
UNIT No.	SERVICE	CFM	FAN RPM	S.P. (IN W.G.)	TYPE/ DRIVE	ELECTRICAL HP-V/PH/HZ	NOTES	MANUFACTURER & MODEL NO.
EF-1	EXHAUST	75	1280	0.375	CAB/DD	48W-120/1/60	1,2,3,4,5	PENN ZEPHYR

TYPES/DRIVES:  
 CAB - CABINET DD - DIRECT DRIVE

NOTES:  
 1. BACKDRAFT DAMPER 3. CONTROLLED BY WALL SWITCH 5. ROOF EXHAUST CAP  
 2. DISCONNECT 4. CEILING MOUNTED

**ARCHITECTS**  
**RAOUL LISSABET, A.I.A.**  
**ARCHITECTS, LLC**  
 19021 SEDLEY TERRACE  
 GAITHERSBURG, MARYLAND 20879  
 Tel: (301) 948-3197 / Fax: (301) 990-4169

GEORGE WORSLEY P.E.  
 7304 GEORGIA AVE., N.W.  
 WASHINGTON, D.C., 20012  
 TEL: (202) 291-1666

Issue Date:		
Revisions		
No.	Date	Description

Permit Set  
 Oct. 15, 2009

**TROPICANA LAUNDROMAT**  
**LAUNDROMAT FIT-UP PLANS**  
 8010 FENTON STREET  
 SILVER SPRING MD, 20910

Project Number: Drawn By:  
 Designed By: Checked By:  
 Sheet Title: **FLOOR PLAN LIGHTING**  
 Sheet Number: **F-2**