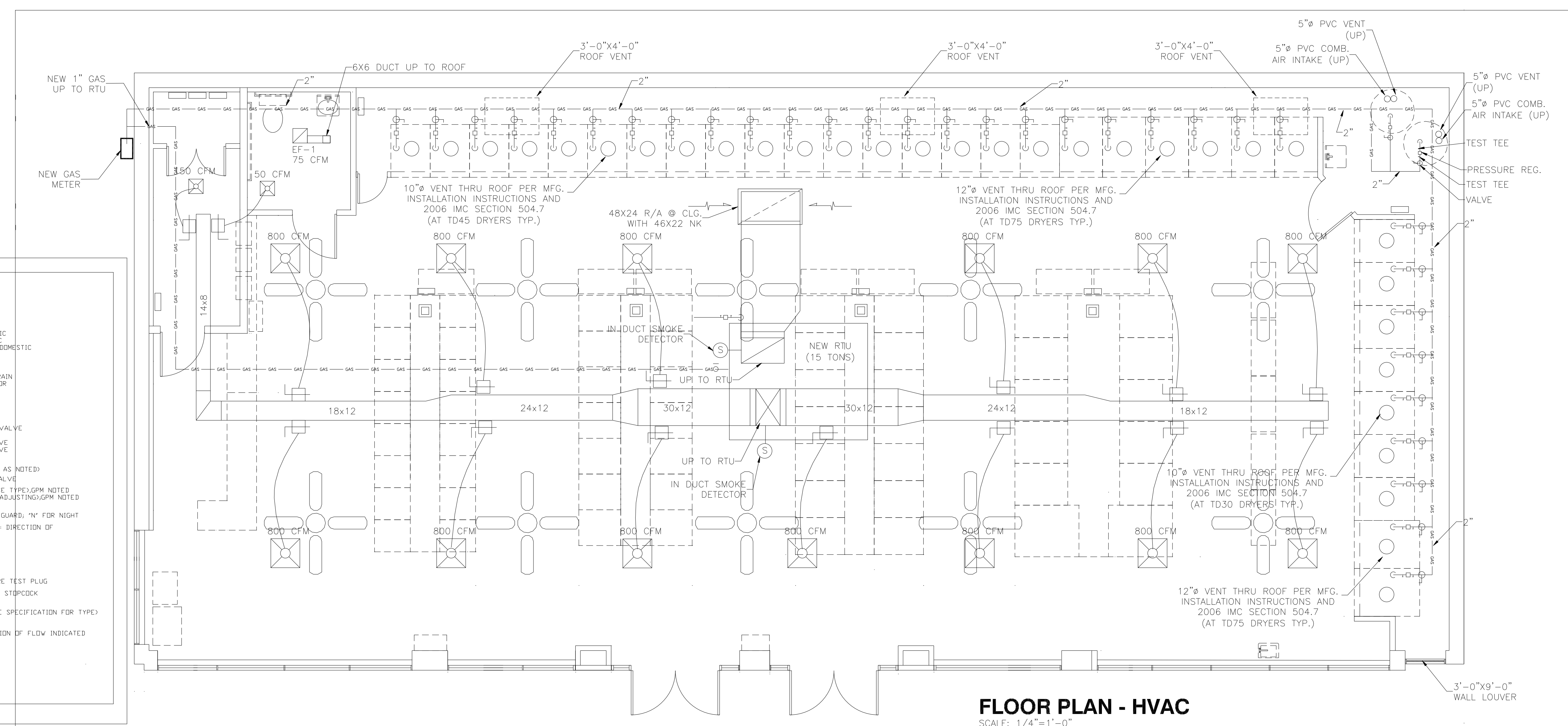
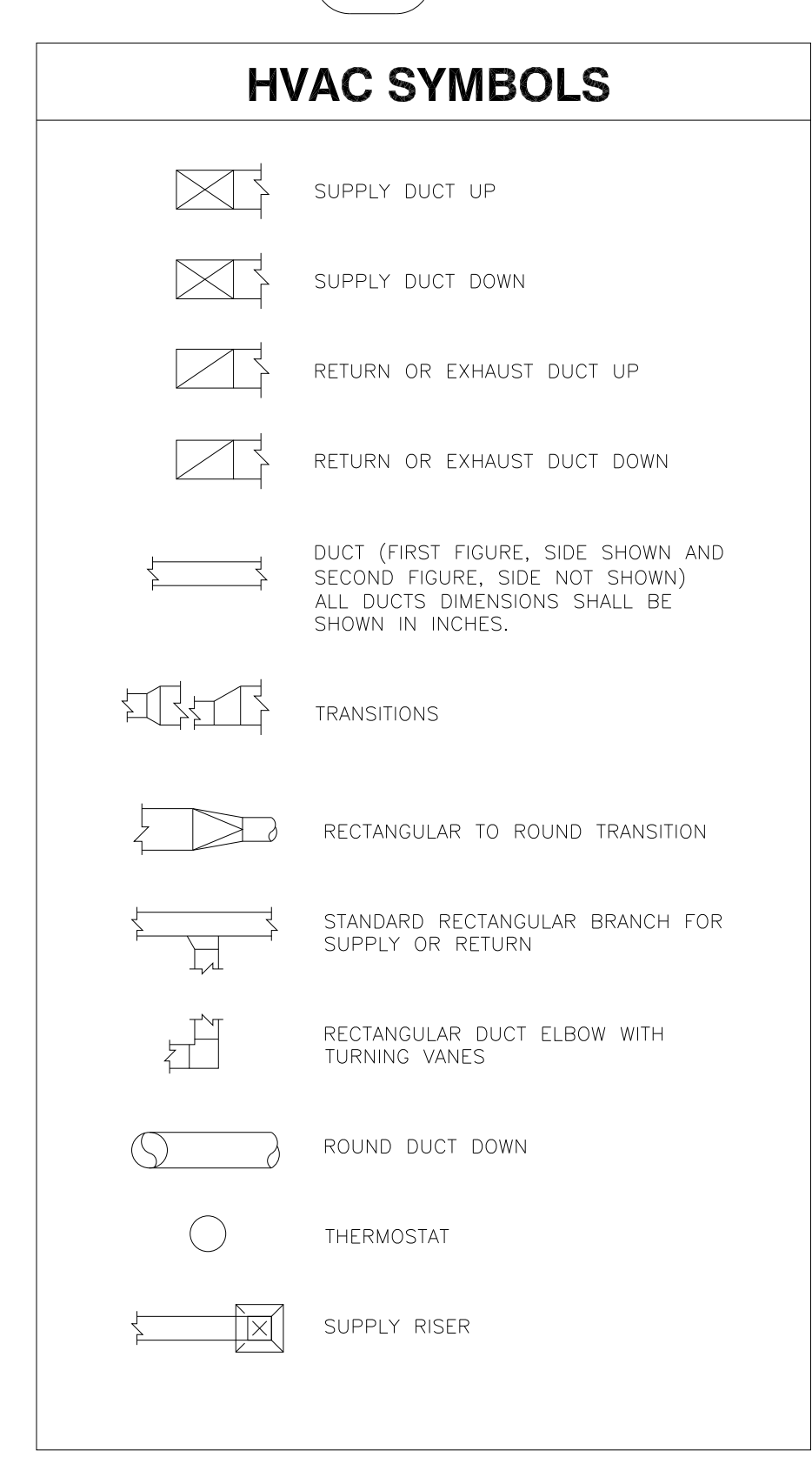


Revisions		
No.	Date	Description



MECHANICAL LEGEND		
SYMBOL	ABBREV.	DESCRIPTION
---	CW	COLD WATER, DOMESTIC
---	HW	HOT WATER, DOMESTIC
---	HWR	HOT WATER RECIRC., DOMESTIC
---	G	GAS
---	SAN	SANITARY
---	V	SANITARY VENT
---	D	(A/C) CONDENSATE DRAIN
---	CD	CLEANOUT LINE, FLOOR
---	CL	CEILING LINE
---	UC	UNDERCUT
---	PRV	PRESSURE REDUCING VALVE
---	---	SOLENOID VALVE
---	---	2-WAY CONTROL VALVE
---	---	3-WAY CONTROL VALVE
---	---	GAS COCK
---	---	RELIEF VALVE (TYPE AS NOTED)
---	---	TERMINAL EXPANSION VALVE
---	FF	FLOW FITTING (ORIFICE TYPE), GPM NOTED
---	FF	FLOW FITTING (SELF-ADJUSTING), GPM NOTED
---	---	THERMOSTAT, 'G' FOR GUARD, 'N' FOR NIGHT
---	---	BACKFLOW PREVENTER, DIRECTION OF FLOW INDICATED
---	---	PIPE GUIDE
---	---	PIPE ANCHOR
---	---	PIPE UNION
---	---	THERMOMETER
---	---	PRESSURE/TEMPERATURE TEST PLUG
---	---	PRESSURE GAUGE WITH STOPCOCK
---	---	GAUGE COCK
---	---	SHUT OFF VALVE (SEE SPECIFICATION FOR TYPE)
---	---	GLOBE VALVE
---	---	CHECK VALVE, DIRECTION OF FLOW INDICATED
---	---	BALANCING VALVE
---	---	DS & Y VALVE
---	---	BALL VALVE
---	---	BUTTERFLY VALVE
---	---	CONNECT TO EXISTING
---	CX	

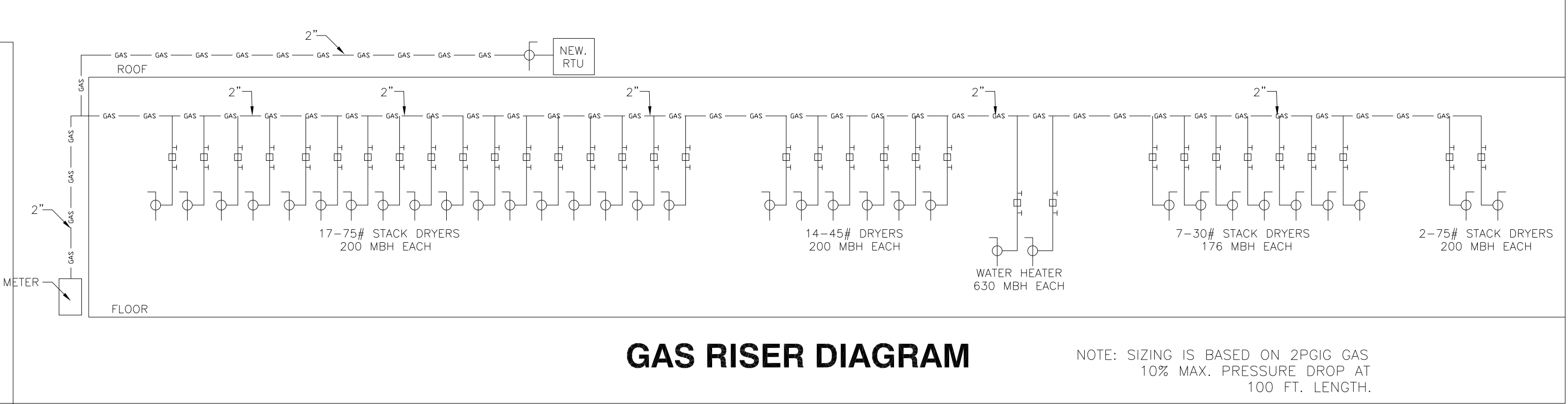
FLOOR PLAN - HVAC
 SCALE: 1/4" = 1'-0"



OUTSIDE AIR CALCULATION					
AREA	SQ.FT.	AREA/PERSONS	PERSONS	O.A./PERSON	MIN. O.A.
SALES AREA	2578	20/1000	51.5	15 CFM	772.5 CFM
TOTAL CFM	772.5 CFM				

EXHAUST FAN SCHEDULE						
ID	MFG.	MODEL	CFM	RPM	DRIVE	SERVES
EF-1	GREENHECK	SP-B90	150	700	DIRECT	BATHROOM

MECHANICAL EQUIPMENT	
EXISTING 15 TON RTU W/ GAS HEATING AND ELECTRIC COOLING A/C UNIT. CARRIER MODEL No 48TJD016 - 208/230V 3ø 60 Hz, 6000 CFM TOTAL ADJUST O.A. TO 1950 CFM	



GAS RISER DIAGRAM
 NOTE: SIZING IS BASED ON 2PGIG GAS 10% MAX. PRESSURE DROP AT 100 FT. LENGTH.

LAUNDROMAT EQUIPMENT SCHEDULE - VENTILATION								
ITEM NO.	DESCRIPTION	MANUFACTURER	MODEL	QUANTITY	VENT CONNECTION	EXHAUST AIR FLOW (PER DRYER)	EXHAUST AIR FLOW (TOTAL CFM)	MAKE-UP AIR SUPPLY (FREE AREA)
⑥	STACK DRYER	SPEED QUEEN	STT30	17	8"	700	11900	23.8 SQ. FT.
⑦	STACK DRYER	SPEED QUEEN	STT45	13	10"	1350	17550	35.1 SQ. FT.
⑧	STACK DRYER	SPEED QUEEN	STT75	2	8"	920	1840	3.6 SQ. FT.
⑨	WATER HEATER SYSTEM	HAMILTON	HE399	2	4"	4"	-	-

NOTES:
 TOTAL EXHAUST AIR FLOW 31,290 CFM.
 TOTAL REQUIRED MAKE-UP AIR FREE AREA : 31,290 CFM / 500CFM PER SQ.FT.= 62.58 SQ.FT.
 TOTAL PROVIDED MAKE-UP AIR FREE AREA: = 63 SQ.FT.