

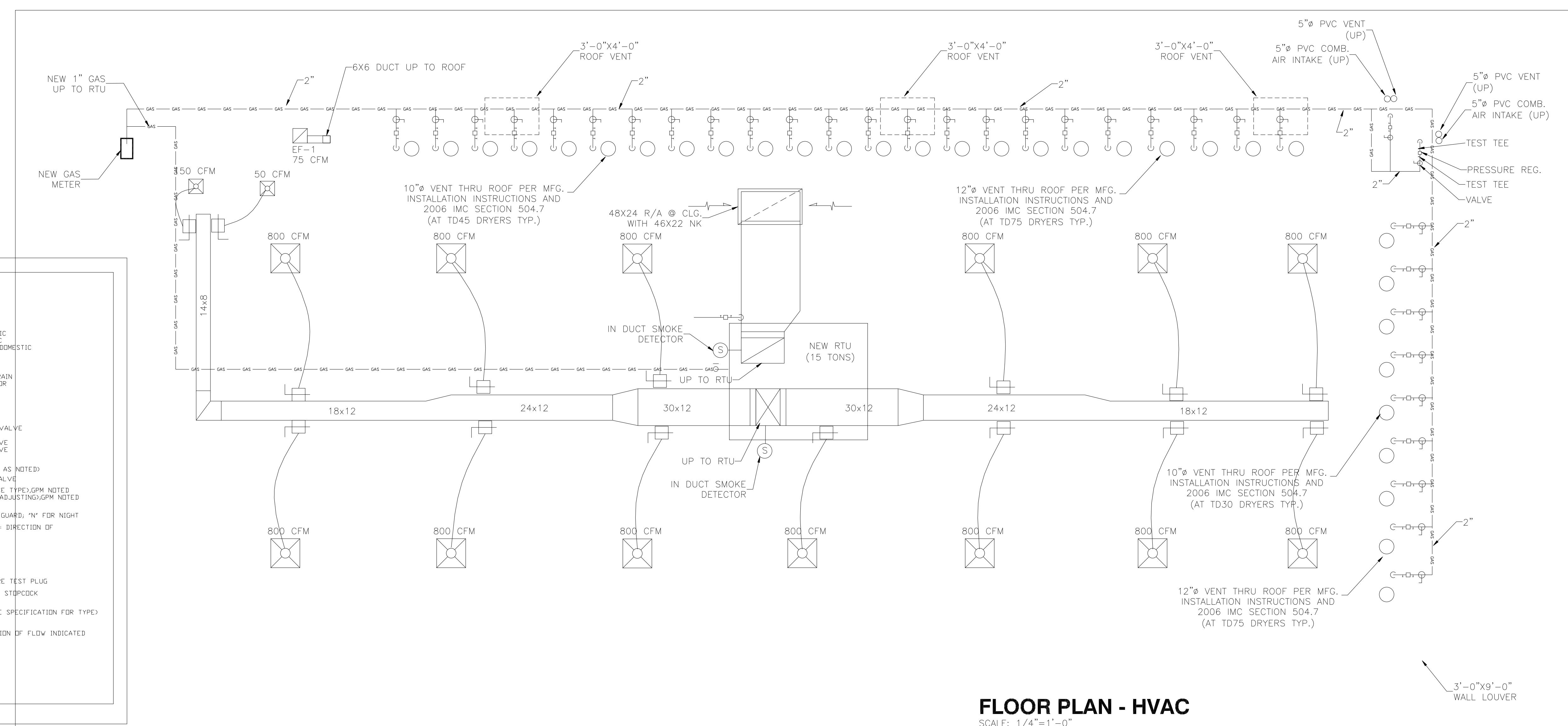
Issue Date: \_\_\_\_\_

Revisions		
No.	Date	Description

**Permit Set**  
 Oct. 15, 2009

**TROPICANA LAUNDROMAT**  
**LAUNDROMAT FIT-UP PLANS**  
 8010 FENTON STREET  
 SILVER SPRING MD, 20910

Project Number: \_\_\_\_\_ Drawn By: \_\_\_\_\_  
 Designed By: \_\_\_\_\_ Checked By: \_\_\_\_\_  
 Sheet Title: **HVAC PLAN**  
 Sheet Number: **M-1**



**MECHANICAL LEGEND**

SYMBOL	ABBREV.	DESCRIPTION
---	CW	COLD WATER, DOMESTIC
---	HW	HOT WATER, DOMESTIC
---	HW R	HOT WATER RECIRC., DOMESTIC
---	G	GAS
---	SAN	SANITARY
---	V	VENT
---	D	CONDENSATE DRAIN
---	CD	CLEANOUT LINE, FLOOR
---	CL	CENTER LINE
---	UC	UNDERCUT
---	PRV	PRESSURE REDUCING VALVE
---	SV	SOLENOID VALVE
---	2-WAY	2-WAY CONTROL VALVE
---	3-WAY	3-WAY CONTROL VALVE
---	GC	GAS COCK
---	RV	RELIEF VALVE (TYPE AS NOTED)
---	TEV	TERMINAL EXPANSION VALVE
---	FF	FLOW FITTING (DRIFICE TYPE), GPM NOTED
---	FF	FLOW FITTING (SELF-ADJUSTING), GPM NOTED
---	T	THERMOSTAT, 'G' FOR GUARD, 'N' FOR NIGHT
---	BFP	BACKFLOW PREVENTER, DIRECTION OF FLOW INDICATED
---	PG	PIPE GUIDE
---	PA	PIPE ANCHOR
---	PU	PIPE UNION
---	TR	THERMISTOR
---	PT	PRESSURE/TEMPERATURE TEST PLUG
---	PG	PRESSURE GAUGE WITH STOPCOCK
---	GC	GAUGE COCK
---	SV	SHUT OFF VALVE (SEE SPECIFICATION FOR TYPE)
---	GV	GLIDE VALVE
---	CV	CHECK VALVE, DIRECTION OF FLOW INDICATED
---	BV	BALANCING VALVE
---	DS & Y	DS & Y VALVE
---	BV	BALL VALVE
---	BV	BUTTERFLY VALVE
---	CX	CONNECT TO EXISTING

**HVAC SYMBOLS**

[Symbol]	SUPPLY DUCT UP
[Symbol]	SUPPLY DUCT DOWN
[Symbol]	RETURN OR EXHAUST DUCT UP
[Symbol]	RETURN OR EXHAUST DUCT DOWN
[Symbol]	DUCT (FIRST FIGURE, SIDE SHOWN AND SECOND FIGURE, SIDE NOT SHOWN) ALL DUCTS DIMENSIONS SHALL BE SHOWN IN INCHES.
[Symbol]	TRANSITIONS
[Symbol]	RECTANGULAR TO ROUND TRANSITION
[Symbol]	STANDARD RECTANGULAR BRANCH FOR SUPPLY OR RETURN
[Symbol]	RECTANGULAR DUCT ELBOW WITH TURNING VANES
[Symbol]	ROUND DUCT DOWN
[Symbol]	THERMOSTAT
[Symbol]	SUPPLY RISER

**OUTSIDE AIR CALCULATION**

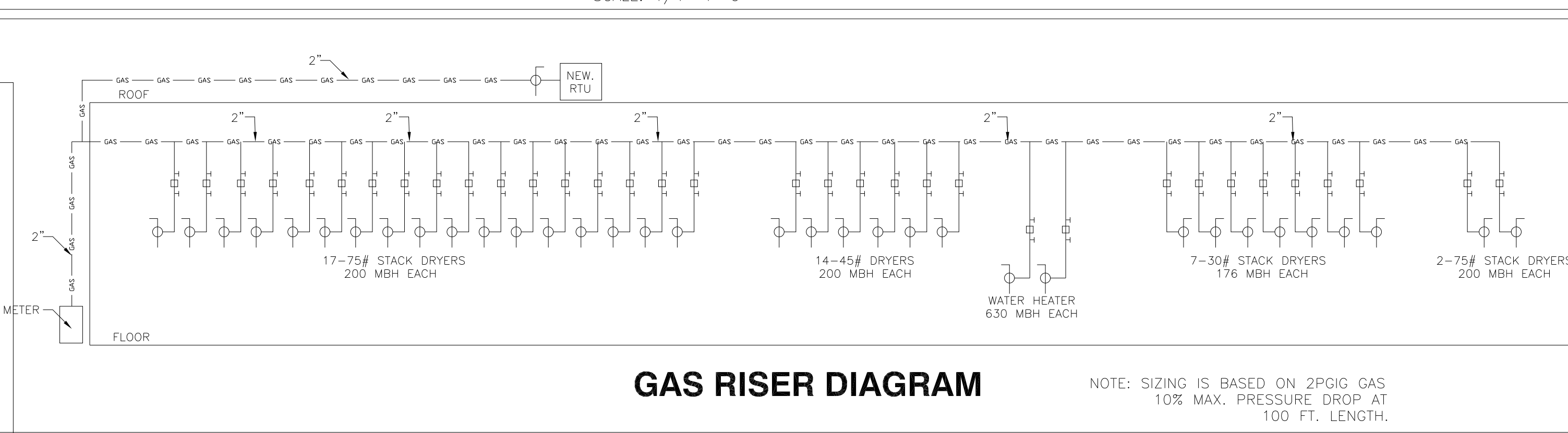
AREA	SQ.FT.	AREA/PERSONS	PERSONS	O.A./PERSON	MIN. O.A.
SALES AREA	2578	20/1000	51.5	15 CFM	772.5 CFM
TOTAL CFM					772.5 CFM

**EXHAUST FAN SCHEDULE**

ID	MFG.	MODEL	CFM	RPM	DRIVE	SERVES
EF-1	GREENHECK	SP-B90	150	700	DIRECT	BATHROOM

**MECHANICAL EQUIPMENT**

EXISTING 15 TON RTU W/ GAS HEATING AND ELECTRIC COOLING A/C UNIT. CARRIER MODEL No. 48TJD016 - 208/230V 3Ø 60 Hz, 6000 CFM TOTAL ADJUST O.A. TO 1950 CFM



**LAUNDROMAT EQUIPMENT SCHEDULE - VENTILATION**

ITEM NO.	DESCRIPTION	MANUFACTURER	MODEL	QUANTITY	VENT CONNECTION	EXHAUST AIR FLOW (PER DRYER)	EXHAUST AIR FLOW (TOTAL CFM)	MAKE-UP AIR SUPPLY (FREE AREA)
⑥	STACK DRYER	SPEED QUEEN	STT30	17	8"	700	11900	23.8 SQ. FT.
⑦	STACK DRYER	SPEED QUEEN	STT45	13	10"	1350	17550	35.1 SQ. FT.
⑧	STACK DRYER	SPEED QUEEN	STT75	2	8"	920	1840	3.6 SQ. FT.
⑨	WATER HEATER SYSTEM	HAMILTON	HE399	2	4"	4"	-	-

NOTES:  
 TOTAL EXHAUST AIR FLOW 31,290 CFM.  
 TOTAL REQUIRED MAKE-UP AIR FREE AREA : 31,290 CFM / 500CFM PER SQ.FT. = 62.58 SQ.FT.  
 TOTAL PROVIDED MAKE-UP AIR FREE AREA: = 63 SQ.FT.