

PLUMBING PLAN - WATER  
1/4"=1'-0"

**ARCHITECTS**  
**RAOUL LISSABET, A.I.A.**  
**ARCHITECTS, LLC**  
 19021 SEDLEY TERRACE  
 GAITHERSBURG, MARYLAND 20879  
 Tel: (301) 948-3197 / Fax: (301) 990-4169

GEORGE WORSLEY P.E.  
 7304 GEORGIA AVE., N.W.  
 WASHINGTON, D.C., 20012  
 TEL.: (202) 291-1666

Issue Date:

Revisions		
No.	Date	Description

Permit Set  
 Oct. 15, 2009

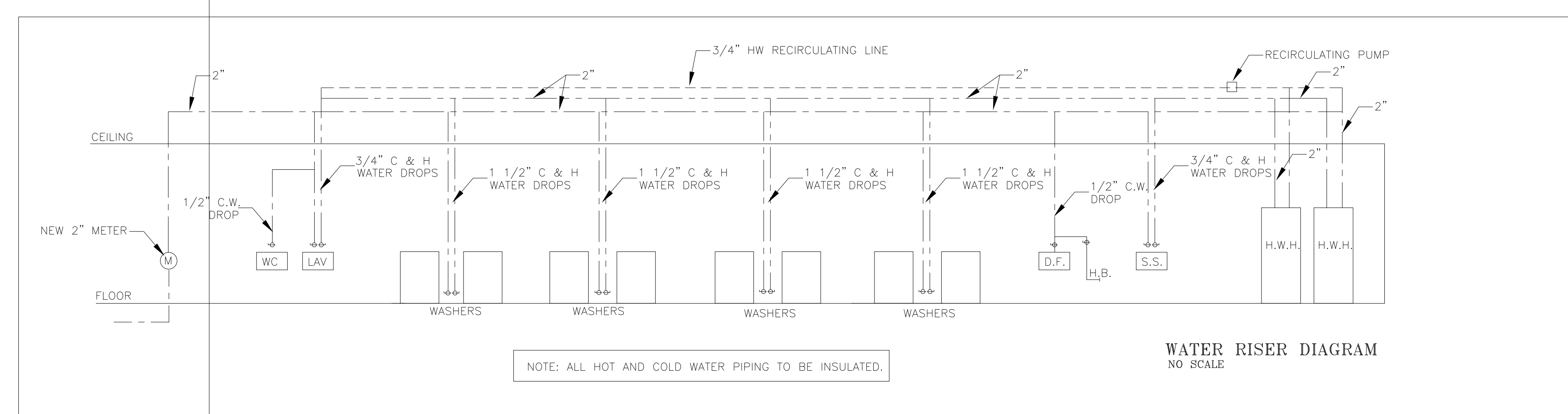
**TROPICANA LAUNDROMAT**  
 LAUNDROMAT FIT-UP PLANS  
 8010 FENTON STREET  
 SILVER SPRING MD, 20910

Project Number: \_\_\_\_\_ Drawn By: \_\_\_\_\_  
 Designed By: \_\_\_\_\_ Checked By: \_\_\_\_\_  
 Sheet Title:  
**PLUMBING PLAN WATER**  
 Sheet Number:  
**P-1**

- GENERAL NOTES:** (APPLY TO ALL DRAWINGS)
- THE LOCATION OF EXISTING UNDERGROUND UTILITIES IS SHOWN IN AN APPROXIMATE WAY ONLY. DETERMINE THE EXACT LOCATION OF ALL EXISTING UTILITIES BEFORE COMMENCING WORK. REPAIR ALL DAMAGES OCCASIONED BY FAILURE TO EXACTLY LOCATE AND PRESERVE ANY AND ALL UNDERGROUND UTILITIES.
  - RUN ALL SOIL, WASTE AND DRAIN PIPING WITH 2 PERCENT MINIMUM GRADE UNLESS OTHERWISE NOTED. HORIZONTAL VENT PIPING SHALL BE GRADED TO DRIP BACK TO THE SOIL OR WASTE PIPE BY GRAVITY.
  - ELEVATIONS NOTED ARE TO CENTERLINES OF PIPES FOR ALL PRESSURE LINES AND TO INVERT FOR ALL GRAVITY FLOW LINES.
  - ADJUST SEWER INVERTS TO KEEP BOTTOM OF PIPES IN LINE WHERE PIPE SIZE CHANGES.
  - MAINTAIN MINIMUM OF 3'-0" COVER OVER UNDERGROUND WATER MAINS AND MINIMUM OF 2'-6" COVER OVER UNDERGROUND SEWERS AND DRAINS.
  - PROVIDE SHUTOFF VALVES IN DOMESTIC WATER SYSTEMS IN BRANCH LINES SERVING TWO OR MORE FIXTURES.
  - UNLESS OTHERWISE NOTED, ALL PIPING AND DUCTWORK IS OVERHEAD, TIGHT TO UNDERSIDE OF SLAB, WITH SPACE FOR INSULATION IF REQUIRED.
  - INSTALL PIPING AND DUCTWORK SO THAT ALL VALVES AND DAMPERS ARE ACCESSIBLE.
  - COORDINATE ALL MECHANICAL WORK WITH ELECTRICAL WORK, ETC., SHOWN ON OTHER DRAWINGS.
  - EXCEPT AS OTHERWISE NOTED, LOCATE ALL ROOM THERMOSTATS 60 INCHES ABOVE FINISHED FLOORS. NOTIFY THE ENGINEER OF ANY ROOMS WHERE THE ABOVE LOCATION CANNOT BE MAINTAINED OR WHERE THERE IS A QUESTION ON LOCATION.
  - IN CORRIDORS WHERE CEILING AND AIR DIFFUSERS ARE INDICATED BETWEEN THE SAME LIGHTING FIXTURE, RELOCATE BOTH DEVICES TO QUARTER POINTS BETWEEN THE SAME FIXTURE.
  - CERTAIN ITEMS SUCH AS ACCESS DOORS, CLEANOUTS, RISE AND DROPS IN DUCTWORK AND PIPING, ETC., ARE INDICATED ON THE DRAWINGS FOR CLARITY OR SPECIFIC LOCATION REQUIREMENT AND SHALL NOT BE INTERPRETED AS THE EXTENT OF THE REQUIREMENTS FOR THESE ITEMS. THE CONTRACTOR SHALL BE RESPONSIBLE FOR THESE ITEMS AS REQUIRED ELSEWHERE IN THE CONTRACT DOCUMENTS.
  - WHERE THE INSTALLATION OF NEW SERVICES OR THE EXTENSION OF EXISTING SERVICES REQUIRE CUTTING OF EXISTING FLOORS, WALLS, PARTITIONS, ETC., IT SHALL BE THE RESPONSIBILITY OF THE CONTRACTOR TO CHECK FOR THE PRESENCE OF EXISTING MECHANICAL AND/OR ELECTRICAL SERVICES WITH OR IMMEDIATELY BENEATH CONSTRUCTION AND EXERCISE NECESSARY PRECAUTIONS TO PREVENT DAMAGE TO THE SERVICES OR INJURY TO HIS PERSONNEL DUE TO CONTACT WITH SAME. WHERE PRACTICAL, SUCH EXISTING SERVICES SHALL BE TEMPORARILY DISCONNECTED DURING THE CUTTING OPERATION. SUCH OUTAGES IN SERVICE SHALL BE SCHEDULED IN ADVANCE WITH THE OWNER.
  - FLOW SCHEMATIC AND RISER DIAGRAMS INDICATE FLOW AND OPERATION CONCEPT AS WELL AS GENERAL ARRANGEMENT OF EQUIPMENT, VALVES, PRESSURE GAUGES, ETC., SHALL BE PROVIDED AS SHOWN ON VARIOUS EQUIPMENT DETAILS. SEE PLANS AND DETAILS FOR PIPE SIZES NOT INDICATED ON FLOW SCHEDULE AND RISER DIAGRAMS.

**PLUMBING LEGEND**

SYMBOL	ABBREVIATION	DESCRIPTION
---	CW	COLD WATER, DOMESTIC
---	HW	HOT WATER, DOMESTIC
---	HW RECIRC	HOT WATER RECIRCULATING, DOMESTIC
---	SAN	SANITARY
---	SV	SANITARY VENT
---	COND	CONDENSATE DRAIN
---	CL	CLEANOUT LINE
---	LD	LOADING DOOR
---	UC	UNDERCUT
---	PRV	PRESSURE REDUCING VALVE
---	SV	SOLENOID VALVE
---	2-WAY	2-WAY CONTROL VALVE
---	3-WAY	3-WAY CONTROL VALVE
---	GV	GAS COCK
---	RV	RELIEF VALVE (TYPE AS NOTED)
---	TE	TERMINAL EXPANSION VALVE
---	FF	FLOW FITTING (ORIFICE TYPE/SPRIN NOTED)
---	FF	FLOW FITTING (SELF-ADJUSTING) NOTED
---	TH	THERMOSTAT, °C FOR GRADE, °F FOR NIGHT
---	FF	BACKFLOW PREVENTER DIRECTION OF FLOW INDICATED
---	PG	PIPE GUIDE
---	PM	PIPE MANSION
---	PU	PIPE UNION
---	TH	THERMISTOR
---	PT	PRESSURE/TEMPERATURE TEST PLUG
---	PG	PRESSURE GAUGE WITH STOPCOCK
---	GC	GAGE COCK
---	SV	SHUT OFF VALVE (SEE SPECIFICATION FOR TYPE)
---	GV	GLOVE VALVE
---	BV	BALL VALVE
---	BV	BALANCING VALVE
---	IS & V	IS & V VALVE
---	BV	BALL VALVE
---	BV	BUTTERFLY VALVE
---	CV	CONNECT TO EXISTING



WATER RISER DIAGRAM  
 NO SCALE

**PLUMBING FIXTURE SCHEDULE**

UNIT NO.	FIXTURE	CW	HW	WASTE	VENT	NOTES	WSSC				MANUFACTURER & MODEL NO.	
							DFU'S	HW SFU'S	CW SFU'S	TOTAL SFU'S		
P-1	WATER CLOSET	1/2"	-	4"	2"	1.3	4	-	5	5	BY OTHERS	
P-2	LAVATORY	1/2"	1/2"	1/2"	1/2"	2.3	1	1.5	1.5	2	BY OTHERS	
P-3	SERVICE SINK	1/2"	1/2"	3"	1/2"	2	2	1.5	1.5	2	BY OTHERS	
P-4	LAUNDRY SINK	1/2"	1/2"	3"	1/2"	2	2	2.25	2.25	3	BY OTHERS	
P-5	DRINKING FOUNTAIN	1/2"	1/2"	3"	1/2"	2	2	0.5	-	0.25	0.25	BY OTHERS
①	CLOTHES WASHER	3/4"	3/4"	3"	INDIRECT	-	4	3	2.25	2.25	3	SPEED QUEEN
②	CLOTHES WASHER	3/4"	3/4"	2"	INDIRECT	-	4	3	2.25	2.25	3	SPEED QUEEN
③	CLOTHES WASHER	3/4"	3/4"	2"	INDIRECT	-	4	3	2.25	2.25	3	SPEED QUEEN

NOTES:  
 1. FLOOR OUTLET  
 2. WALL OUTLET  
 3. ADA COMPLIANT  
 4. INDIRECTLY CONNECTED TO FLOOR DRAIN