

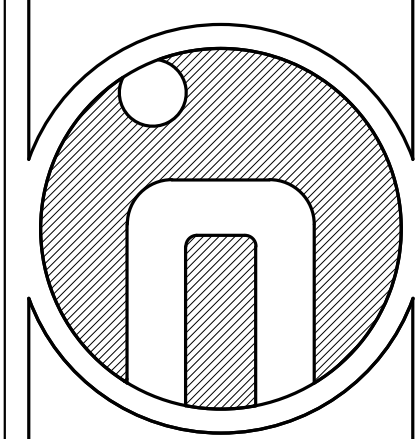
KEY NOTES

- ① PROPERTY LINE
- ② TRANSLUCENT PANEL/SCREEN
- ③ HANGING CANOPY
- ④ COAT CLOSET
- ⑤ HOSTESS STAND
- ⑥ UTILITY METERS
- ⑦ POS
- ⑧ FLAT SCREEN TV
- ⑨ BASE CABINETS
- ⑩ JANITOR'S CLOSET
- ⑪ OUTDOOR CONCRETE
- ⑫ PARKING ONE(1) SPACE - NEW CONC. SLAB
- ⑬ TWO-STORY NEIGHBORING STRUCTURE AT STREET
- ⑭ ONE-STORY NEIGHBORING STRUCTURE AT REAR
- ⑮ THREE-STORY NEIGHBORING STRUCTURE
- ⑯ THREE COMPARTMENT SINK
- ⑰ DISHWASHER
- ⑱ HAND SINK
- ⑲ WINE COOLER
- ⑳ FREEZER
- ㉑ ICE MAKER
- ㉒ LOCKABLE LIQUOR CABINET
- ㉓ INFILL EXISTING WINDOW
- ㉔ LOCKERS
- ㉕ WALK-IN FRIDGE
- ㉖ GLASS WASHER
- ㉗ ICE BIN WITH DIVIDERS W/INTEGRATED COOLED SODA GUN LINE
- ㉘ SODA GUN
- ㉙ DIRECT DRAW BEER DISPENSER (8) TAPS CONNECTED WITH WALK-IN REFR. AT BSMT.
- ㉚ HAND SINK
- ㉛ 50" SLIDE TOP UNDERBAR COOLER
- ㉜ BACK BAR COOLER, UNDER COUNTER
- ㉝ BACK BAR COOLER W/GLASS DOORS. UNDERCOUNTER
- ㉞ HOSE BID. CONFIRM LOCATION IN FILED W/ARCHITECT
- ㉟ SHUT OFF VALVE FOR HOSE BID
- ㊱ SLOPE GRADE TO ALLEY 1/4"VSF.
- ㊲ PARTITION TO ALIGN WITH STAIR AND PARTITION ABOVE.
- ㊳ VIF EXTENTS OF EXPOSED BRICK AND FURRED COMMON HALL
- ㊴ CONTRACTOR TO PROTECT, REPAIR AND REPLACE SIDEWALK AS REQUIRED FOR A SMOOTH AND CONTINUOUS SURFACE
- ㊵ FUR-OUT WALL BELOW COUNTER TOP TO ALIGN WITH WALL TYPE 2.
- ㊶ LOCATE ALL BUILT IN HIGH TABLES AT CENTER OF LIGHTS ABOVE. SEE SHEET A104
- ㊷ CONTROL JOINT AT CONCRETE SLAB
- ㊸ DUMPSTER (2) 6'-8" x 4'-1"
- ㊹ 6' BOARD COMPOSITE WOOD FENCE SYSTEM, FLAT TOP W/ CAPRAIL & FACIA
- ㊺ RELOCATE ACCESS PANEL TO CRAWL SPACE. 3'-0"W x 3'-0"T WOOD DOOR AT 6'-6" HEIGHT. SEE INTERIOR ELEVATION
- ㊻ VAPOR BARRIER AT CRAWL SPACE

GENERAL NOTES

1. CONTRACTOR TO CHALK ALL PARTITIONS FOR APPROVAL BY ARCHITECT PRIOR TO ERECTING PARTITIONS

INSCAPE STUDIO
 1353 U ST. NW
 Washington, DC 20009
 www.inscapestudio.com
 T: 202.332.7222 F: 202.332.7221
 Project Architect: Gregory Kearley



3632 GEORGIA AVENUE, LLC 07.006
 THE BLUE BANANA
 3632 GEORGIA AVE, NW
 WASHINGTON, DC 20010
BID DOCUMENTS

REVISIONS

2	07/19/10
3	07/30/10

SEAL

SCALE

3/16" = 1'-0"

15 FEB 10

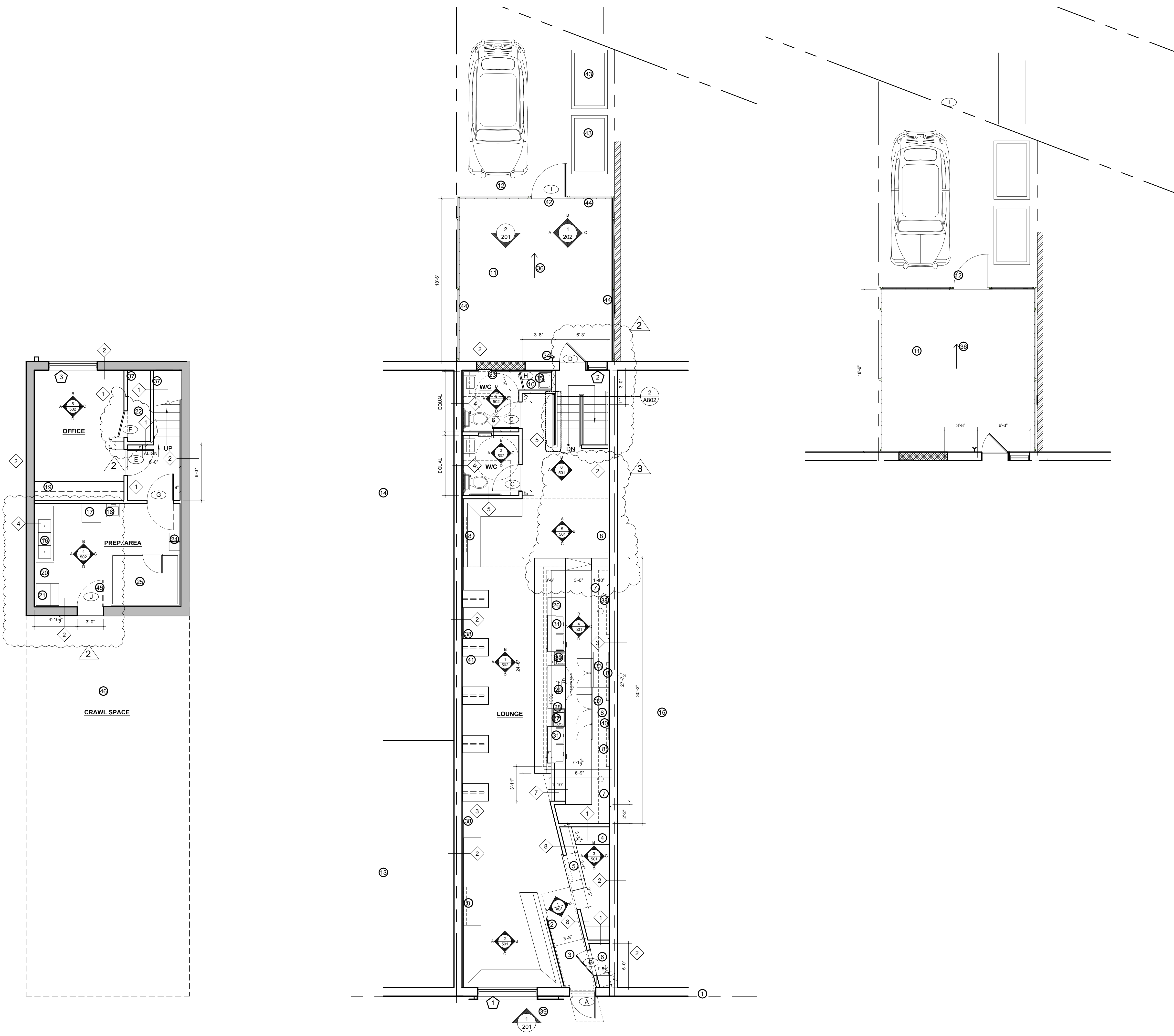
ISSUE

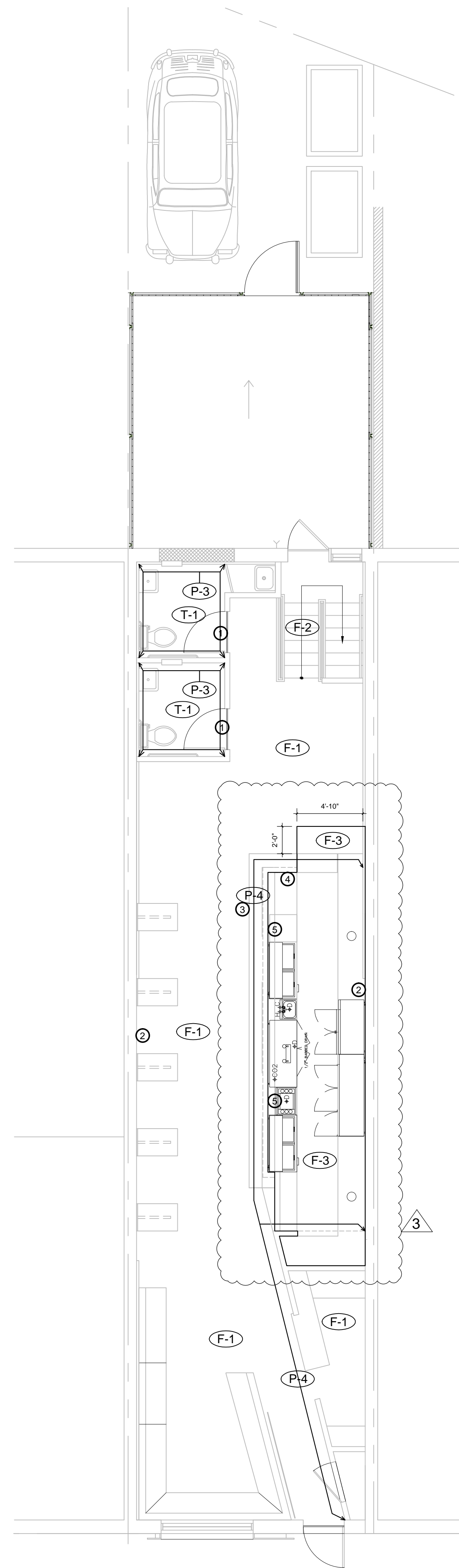
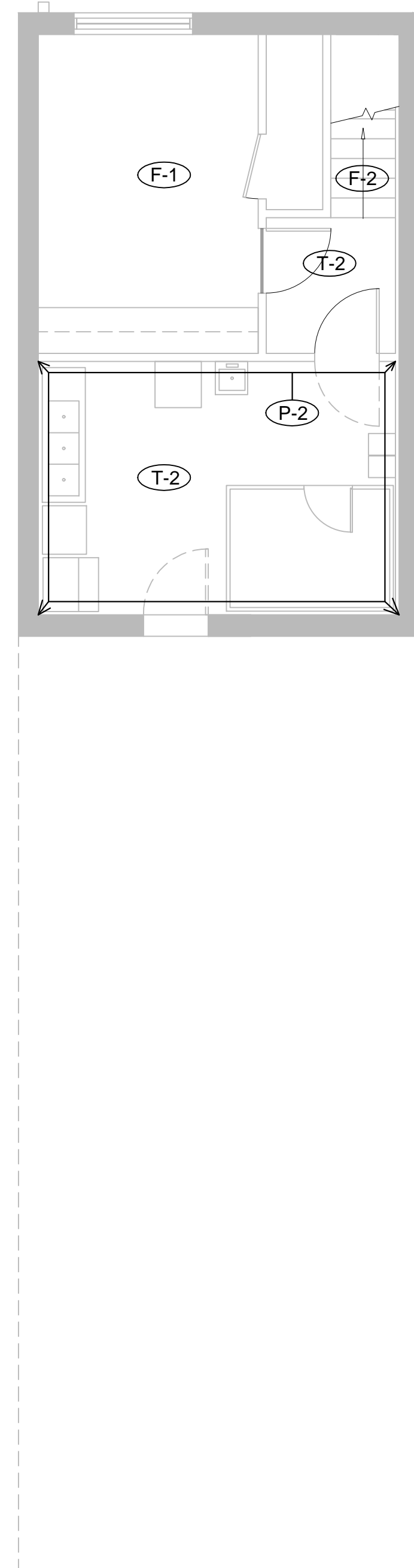
SHEET NAME

PLANS

A101

SHEET NO.





FINISH SCHEDULE						
MARK	LOCATION	MANUFACTURER	STYLE	COLOR	FINISH	UNIT/COST
F-1	ALL LOUNGE FLOOR + OFFICE @ BASEMENT	TEKA EASY SOFT LOC.	WHITE OAK ACTIVE GOLDEN CARBONIZED BRUSH OIL 14X127X1085MM		-	\$-
F-2	STAIRS	TBD	WOOD TREADS TO MATCH WOOD FLOOR	MATCH FLOOR COLOR	-	\$7SF
T-1	RESTROOMS AND JAN CLOSET	DALTILE	PORCELTO PORCELAIN TILE 12X12	SUEDE GRAY CD19	-	\$-
T-2	PREP. AREA AND HALL	DALTILE	QUARRY TILE 6X6 TILE	ARID GRAY 0Q42 PRICE GROUP 2	-	\$-
P-1	FIELD PAINT	BENJAMIN MOORE	WHITE PAINT	TBD	FLAT	\$-
P-2	PREP. AREA WALLS	BENJAMIN MOORE	WHITE PAINT	TBD	SEMI-GLOSS	\$-
P-3	WATER CLOSET WALLS	BENJAMIN MOORE	COLOR PAINT	TBD	EGG SHELL	\$-
P-4	ACCENT WALL	BENJAMIN MOORE	COLOR PAINT	TBD	EGG SHELL	\$-
F-3	BAR FLOOR	EPOXY FLOOR		COLOR TO BE APPROVED BY ARCHITECT		

- ### KEY NOTES
- ① SCHLUTER STRIP AT TILE/WOOD TRANSITION
 - ② CONTRACTOR TO CLEAN BRICK WITH WIRE BRUSH & MURIATIC ACID. FINISH BRICK WITH CLEAR COAT MATTE FINISH TBD. \$25/GALLON ALLOWANCE.
 - ③ PAINT COLOR ALSO TO INCLUDE ENTIRE SOFFIT ABOVE BAR ON INTERIOR AND EXTERIOR SIDES INCLUDING CEILING.
 - ④ SCHLUTER TRANSITION STRIP. SEE GENERAL NOTE #5
 - ⑤ EPOXY FLOOR TO COME UP 6" ON INSIDE FACE OF BAR-WALL

- ### GENERAL NOTES
1. INTERIOR SCOPE OF WORK TO INCLUDE ALL NEW, ALTERED OR AFFECTED AREAS OF CONSTRUCTION. ALL PAINT COLORS FOR NEW CONSTRUCTION TO BE PROVIDED BY OWNER/ARCHITECT. ASSUME (3) 3'X3' SWATCHES OF PAINT NEAR TRIM OVER PRIMER PRIOR TO FINAL PAINT COLOR SELECTION. FINAL PAINT SELECTION TO BE DETERMINED ON SITE BY ARCHITECT/OWNER.
 2. ALL PAINTS, STAINS, SEALERS, ADHESIVES AND OTHER APPLIED FINISHES ARE TO BE LOW-VOC; VOC CONTENT NOT TO EXCEED 150 G/L OR 1.25 LB/GAL. FOR INTERIOR, 250 G/L EXTERIOR.
 3. ALL SURFACES TO BE PAINTED SHALL RECEIVE ONE (1) COAT PRIMER AS REQUIRED AND TWO (2) COATS OF PAINT. MANUFACTURER TO BE BENJAMIN MOORE: ECOSPEC OR EQUIVALANT. WALLS TO BE PAINTED WITH FLAT FINISH U.O.N., TRIM TO BE SEMI-GLOSS, CEILINGS TO BE FLAT. USE PRIMER COMPATIBLE WITH THE SURFACE BEING COVERED AND THE FINISH COATS COVERING IT. LOW VOC PAINT IS A REQUIREMENT UNLESS OTHERWISE SPECIFIED. PAINT COLOR TBD.
 4. ALL THRESHOLDS TO BE PROVIDED BY CONTRACTOR AS SPECIFIED BY THE ARCHITECT
 5. ALL STRAIGHT THRESHOLDS BETWEEN DIFFERENT FINISH FLOORS TO BE SCHLUTER SYSTEMS, MODEL RENO T, FINISH: ANODIZED ALUMINUM. VERIFY HEIGHT OF RAMP THRESHOLD WITH FLOOR FINISH THICKNESS. SEE DETAILS.
 6. FINISH COAT BACK ROLLED AND BRUSHED. NOT SPRAYED

INSCAPE STUDIO
 1353 U ST. NW
 Washington, DC 20009
 www.inscapestudio.com
 T: 202.332.7222 F: 202.332.7221
 Project Architect: Gregory Kearley

3632 GEORGIA AVENUE, LLC 07.006
 THE BLUE BANANA
 3632 GEORGIA AVE, NW
 WASHINGTON, DC 20010

BID DOCUMENTS

REVISIONS	
2	07/19/10
3	07/30/10

SCALE
 3/16" = 1'-0"

ISSUE
 15 FEB 10

SHEET NAME
 FINISH PLANS

SHEET NO.
A102A

1. BASEMENT FINISH PLAN

2. GROUND FLOOR FINISH PLAN

KEY NOTES

- ① ELECTRICAL PANEL AND METERS LOCATION
- ② PROVIDE POWER TO MARQUEE , CONTRACTOR TO REVIEW SPECS.
- ③ CONTRACTOR TO REVIEW SPECS FOR ALL BAR EQUIPMENT
- ④ PROVIDE POWER AS REQUIRED FOR WALK-IN REF. SEE CUT SHEET

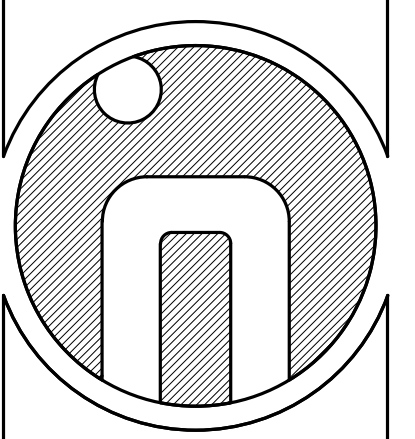
GENERAL NOTES

- 1. CONFIRM ALL POWER REQUIREMENTS FOR ALL EQUIPMENT. ARCHITECT SHOWS OUTLETS FOR ALL EQUIPMENT, HOWEVER, SOME EQUIPMENT MAY BE HARDWIRED OR NEED ADDITIONAL POWER
- 2. CONTRACTOR TO SET ALL ELECTRICAL DEVICES FOR ARCHITECT APPROVAL PRIOR TO PULLING WIRE

LEGEND

- ⊕ DUPLEX OUTLET
- ⊕ QUAD OUTLET
- ⊕_{GFI} GFI OUTLET
- ⊕_{FM} FLOOR-MOUNTED OUTLET
- ▲ TELEPHONE/DATA OUTLET
- ⊕_{TV} CABLE TV
- ⊕ GARBAGE DISPOSAL
- ⊕ SECURITY INTERCOM

INSCAPE STUDIO
 1353 U ST, NW
 Washington, DC 20009
 www.inscapestudio.com
 T: 202.332.7222 F: 202.332.7221
 Project Architect: Gregory Kearley



3632 GEORGIA AVENUE, LLC 07.006
 THE BLUE BANANA
 3632 GEORGIA AVE, NW
 WASHINGTON, DC 20010
BID DOCUMENTS

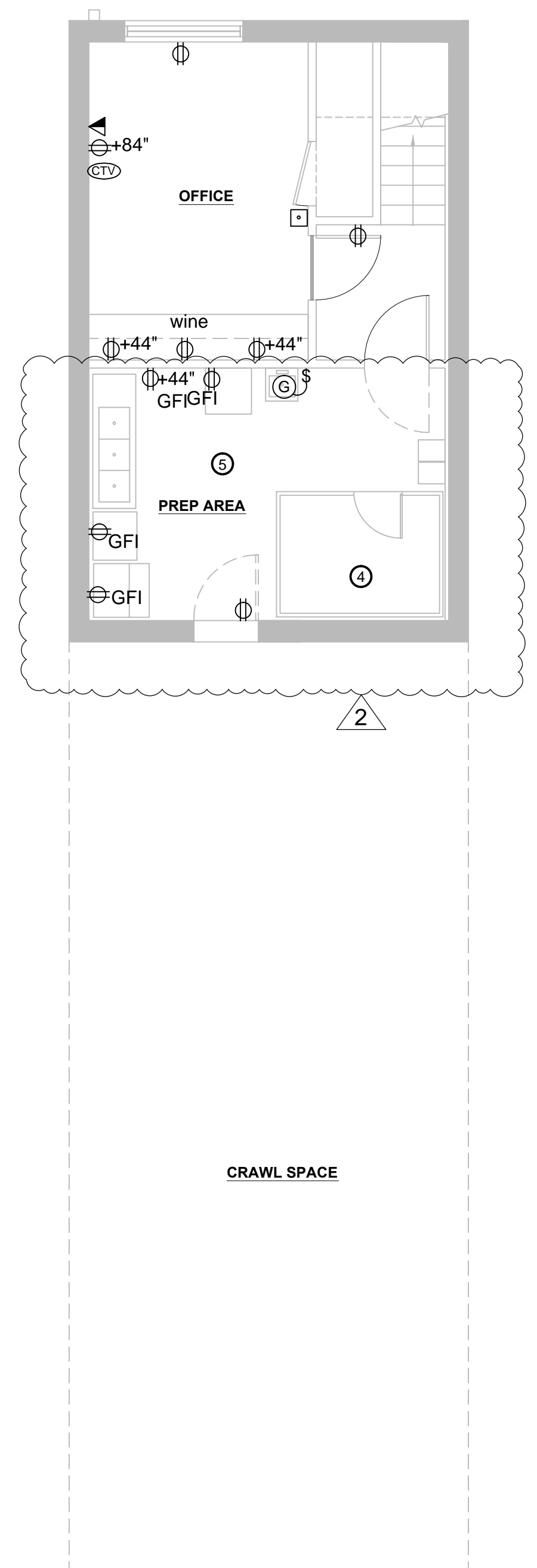
REVISIONS	
2	07/19/10
3	07/30/10

SCALE
 3/16" = 1'-0"

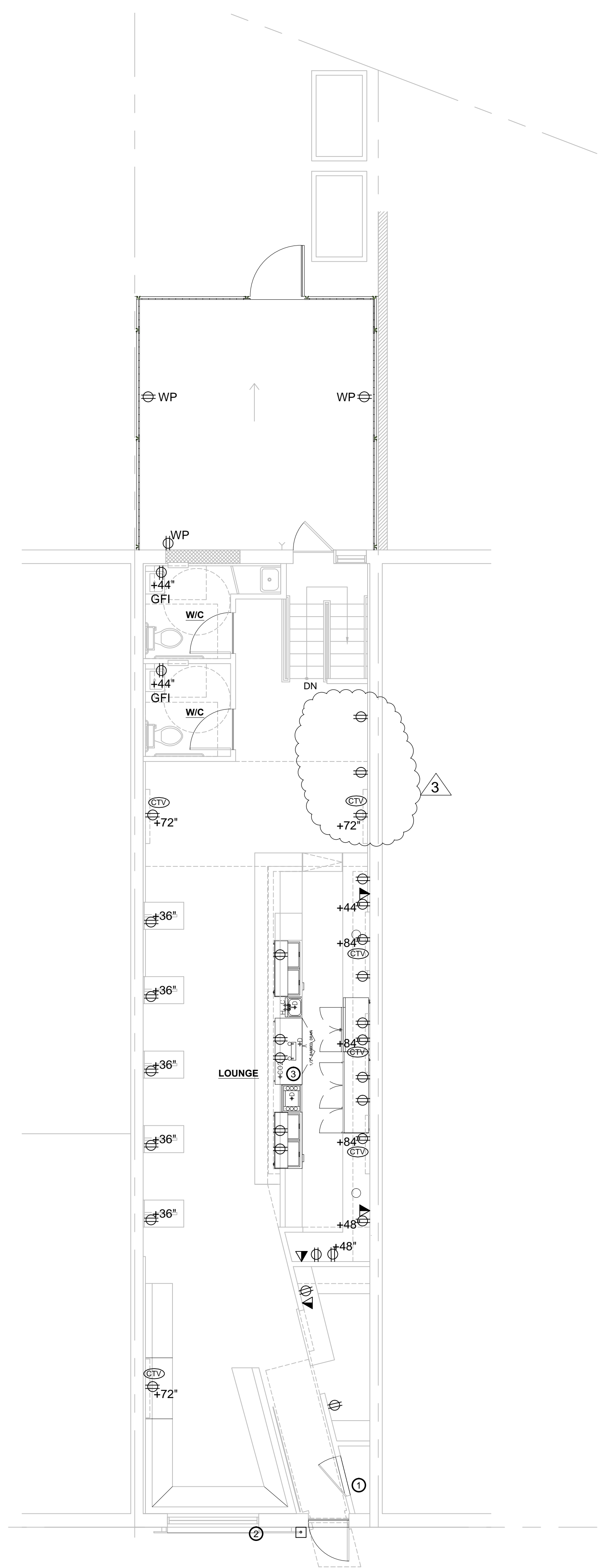
ISSUE
 15 FEB 10

SHEET NAME
POWER PLANS

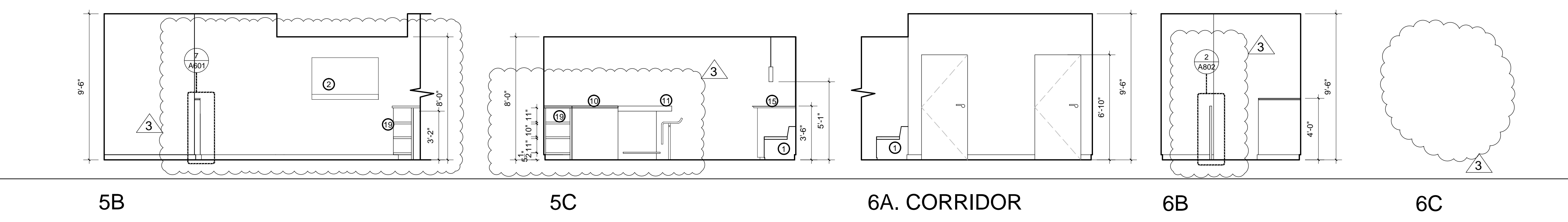
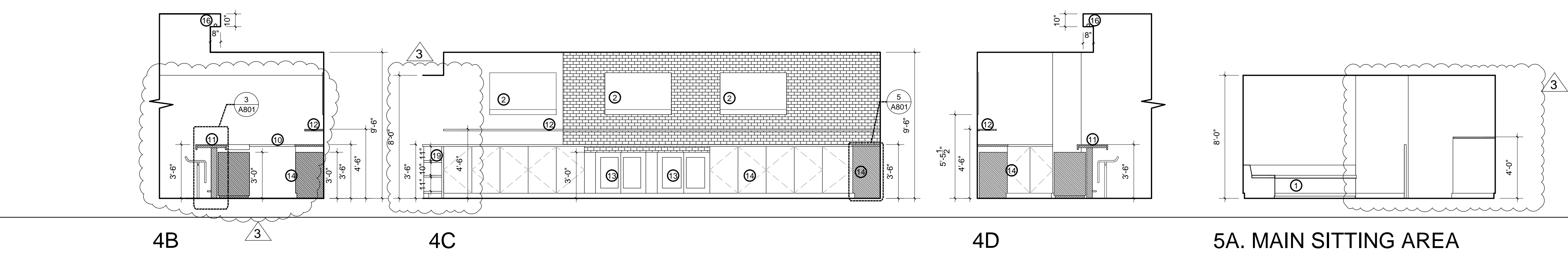
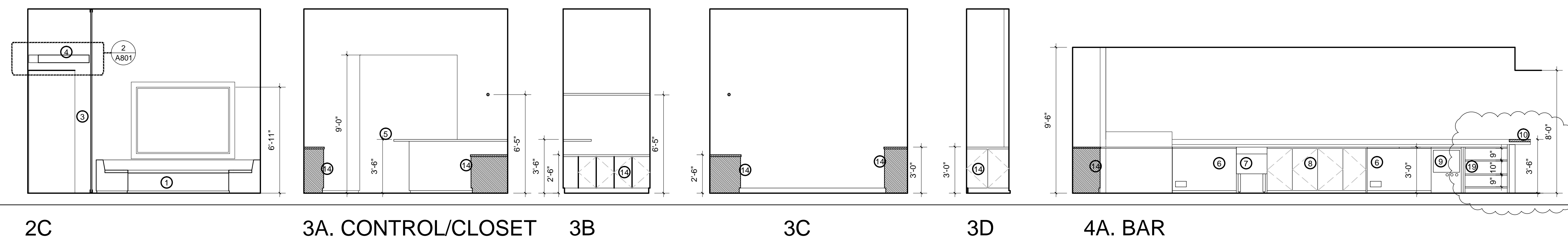
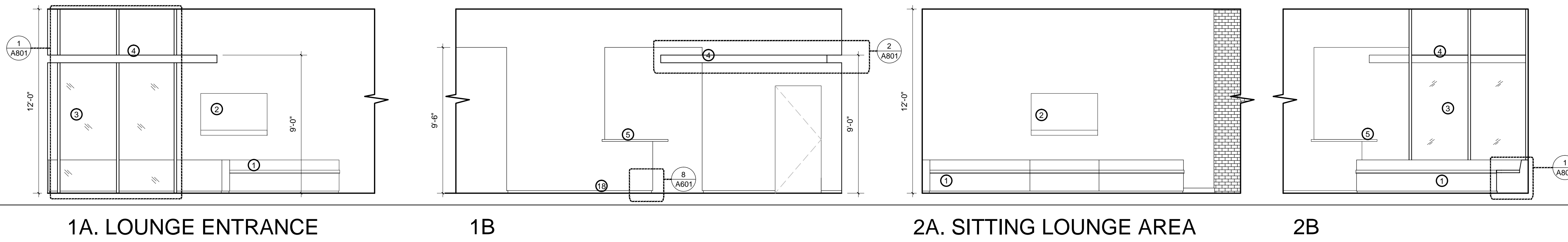
SHEET NO.
A103



BASEMENT



GROUND FLOOR



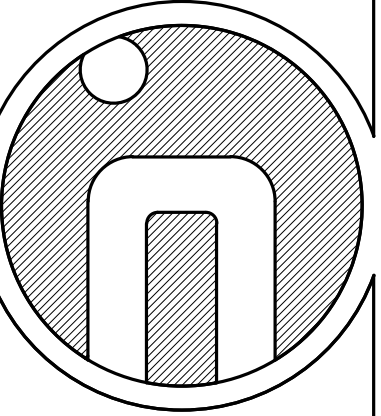
KEY NOTES

- ① BANQUETTE TBD.
- ② FLAT SCREEN TV
- ③ RESIN PANEL SYSTEM 3D FORM VARIA
- ④ HANGING CANOPY. SEE DETAILS
- ⑤ CONTROL POINT BAR WITH METAL TOP BAR
- ⑥ 50" SLIDE TOP UNDERBAR COOLER
- ⑦ ICE BIN WITH DIVIDERS W/INTEGRATED COOLED SODA GUN LINE
- ⑧ CABINETS DOORS UNDERNEATH DIRECT DRAW BEER DISPENSER (8) TAPS
- ⑨ GLASS WASHER
- ⑩ LAMINATED WOOD FLIP UP DOOR
- ⑪ METAL BAR TOP. SEE DETAIL SHEET A801
- ⑫ LAMINATED WOOD SHELF W/EXPOSED WOOD EDGE
- ⑬ COOLER
- ⑭ BASE CABINETS. PARTICLE BOARD WITH NEVAMAR PLAM BLACK S6001T ON TOP, BACK AND ALL EDGES. COUNTERTOP: LAMINATED PLYWOOD WITH PLAM TBD ON TOP. EXPOSED PLYWOOD EDGE ON COUNTER TOPS TO BE 1 1/2" TOTAL THICKNESS.
- ⑮ TALL TABLES. SEE DETAILS SHEET A801
- ⑯ LIGHT FIXTURE
- ⑰ 1x4 BASE TYPICAL
- ⑱ PITCON INDUSTRIES ALUMINUM REVEALED BASEBOARD
- ⑲ BASE CABINET WITH SHELVES-PARTICLE BOARD WITH NEVAMAR PLAM BLACK S6001T ON TOP, BACK AND ALL EDGES

GENERAL NOTES

- 1. CONTRACTOR TO PROVIDE BLOCKING AS REQUIRED FOR ALL ACCESSORIES, FIXTURES AND SHELVING.
- 2. ALL CABINET DOORS HANDLES TO BE AMEROCK 128MM PULL ESSENTIAL Z BP19200-G10
- 3. ALL INTERIOR DOOR LEVERS TO BE SCHLAGE MANHATTAN, SATIN CHROME

INSCAPE STUDIO
 1353 U ST. NW
 Washington, DC 20009
 www.inscapestudio.com
 T: 202.332.7222 F: 202.332.7221
 Project Architect: Gregory Kearley



3632 GEORGIA AVENUE, LLC 07.006
 THE BLUE BANANA
 3632 GEORGIA AVE, NW
 WASHINGTON, DC 20010
BID DOCUMENTS

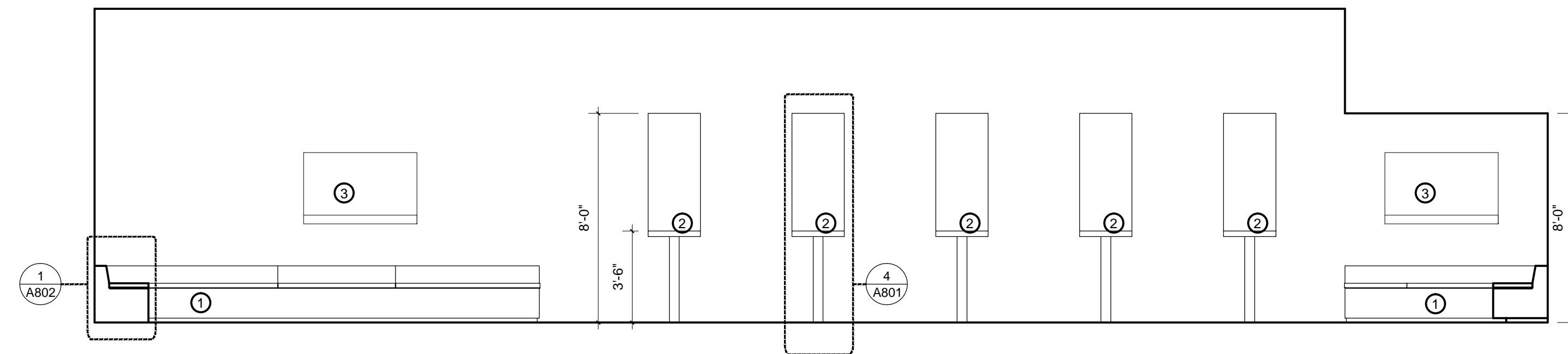
REVISIONS

SCALE
 1/4" = 1'-0"

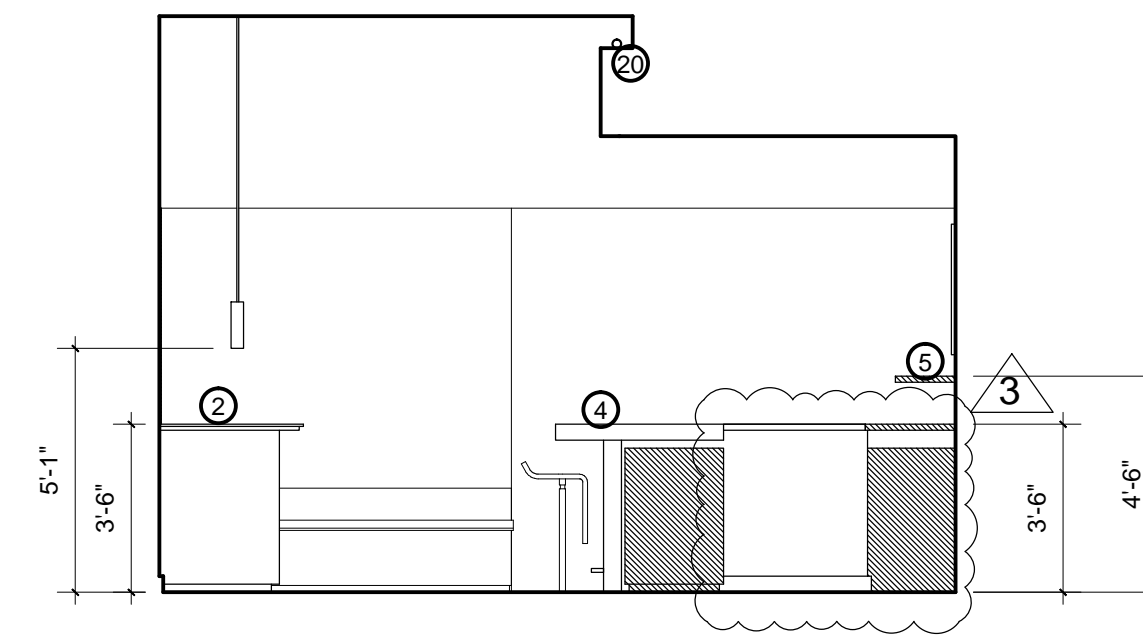
15 FEB 10
 ISSUE

SHEET NAME
INTERIOR ELEVATIONS

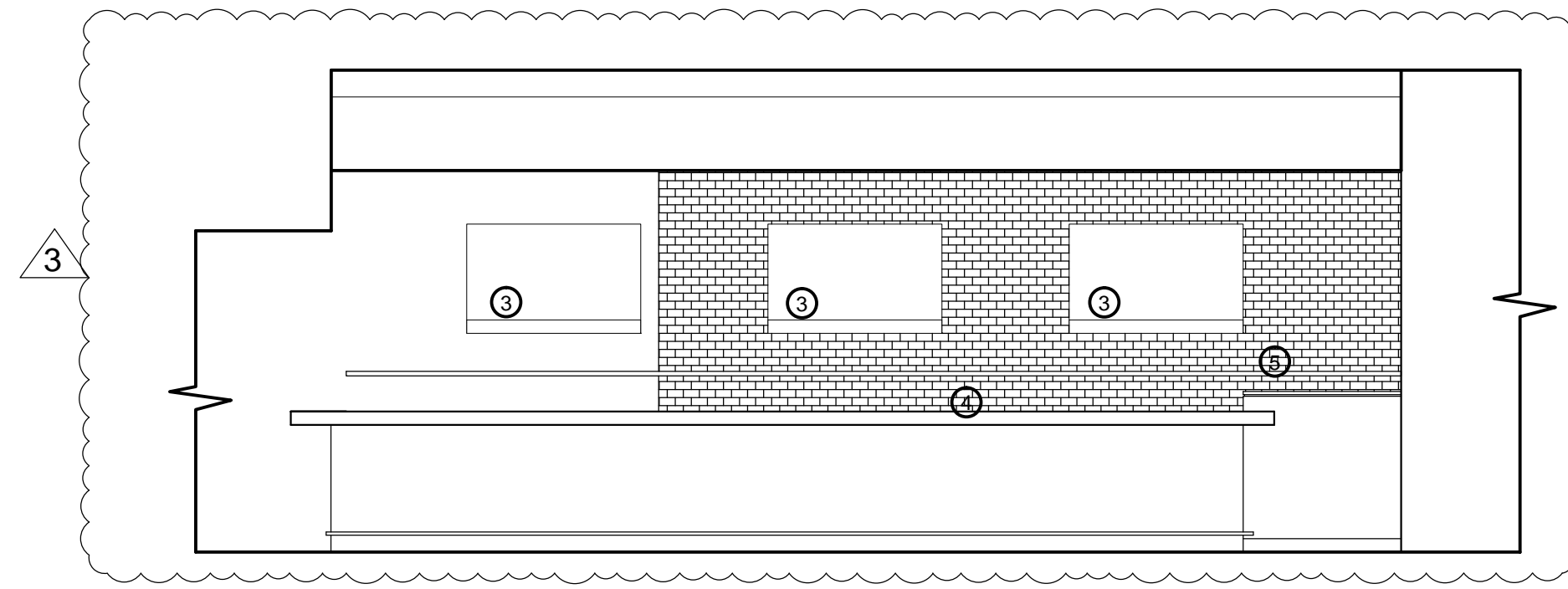
A501
 SHEET NO.



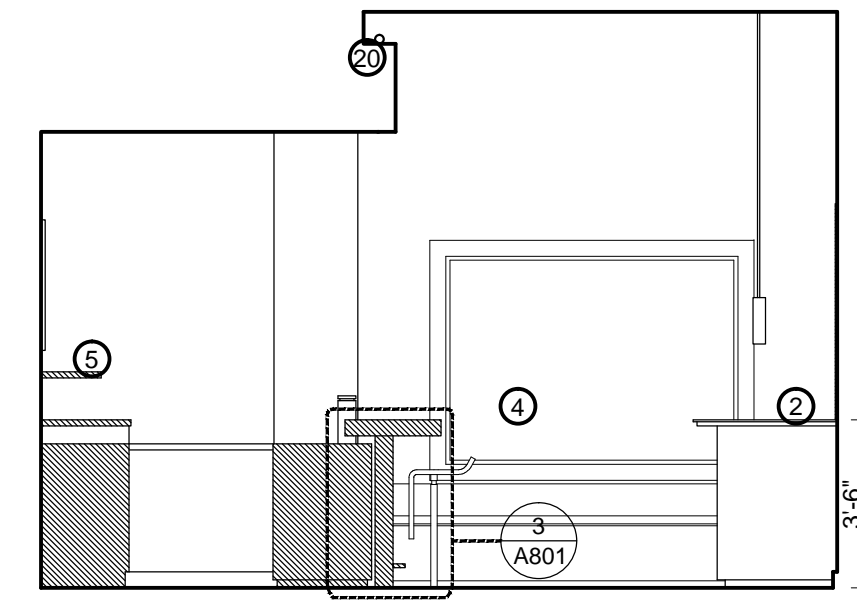
1A. MAIN LOUNGE AREA



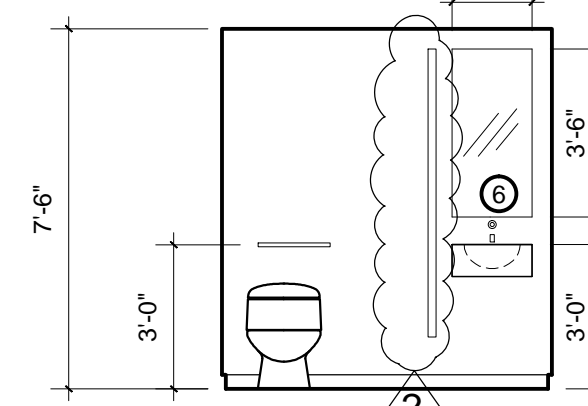
1B



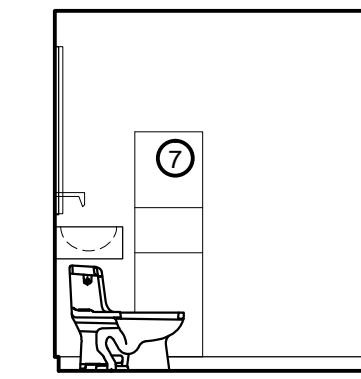
1C



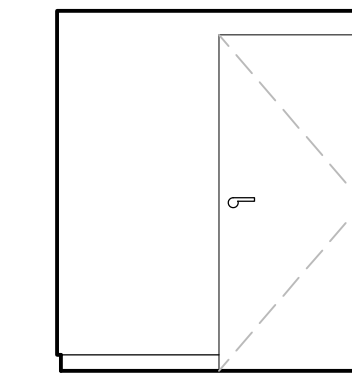
1D



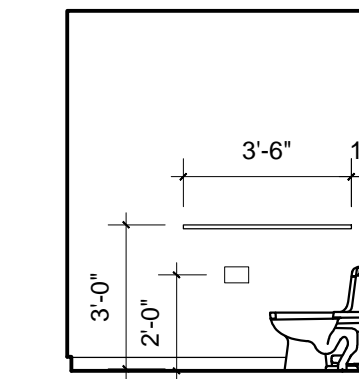
2A. RESTROOM



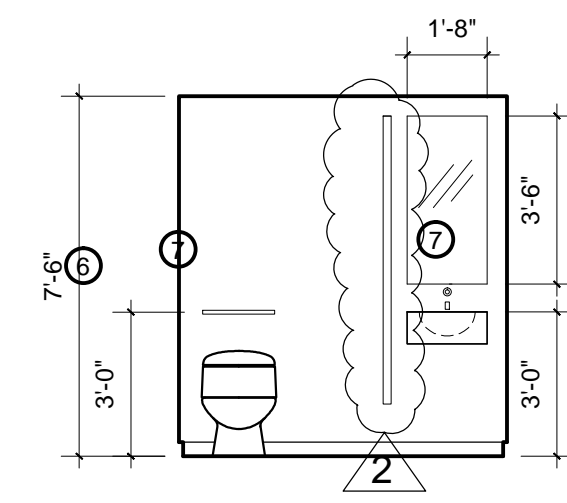
2B



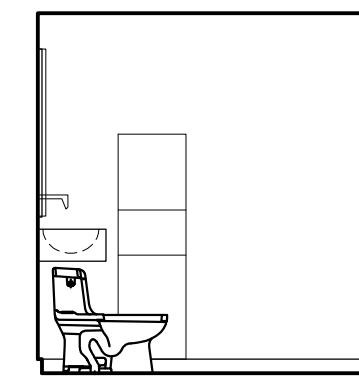
2C



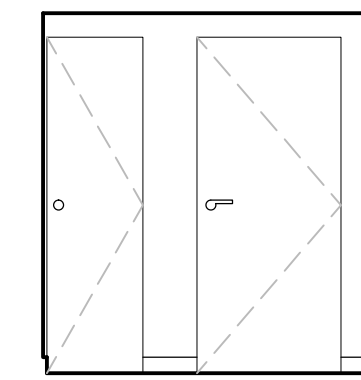
2D



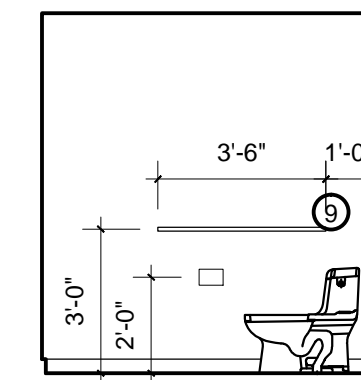
3A. RESTROOM



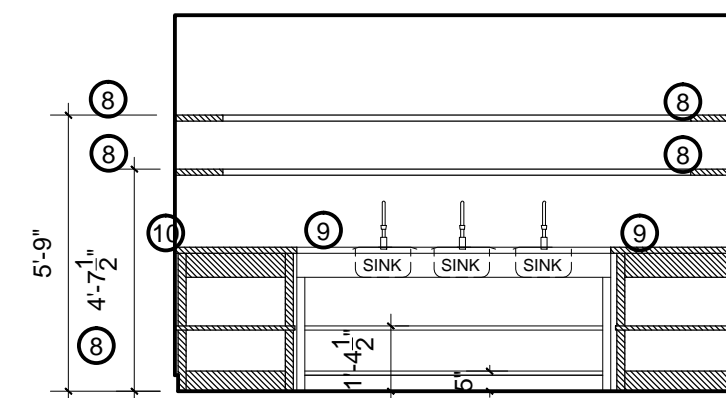
3B



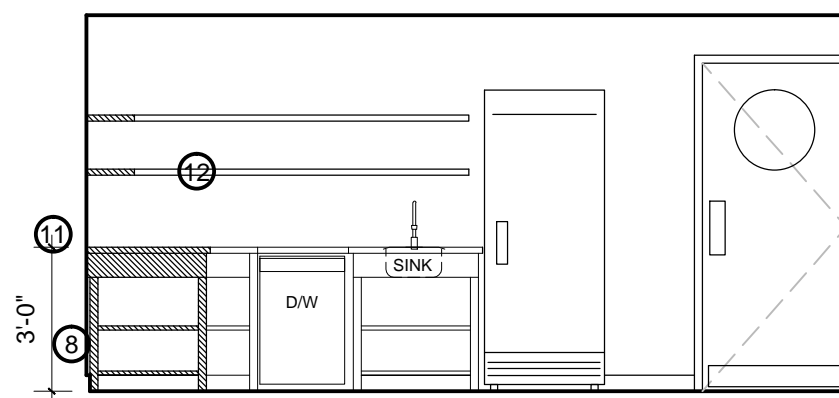
3C



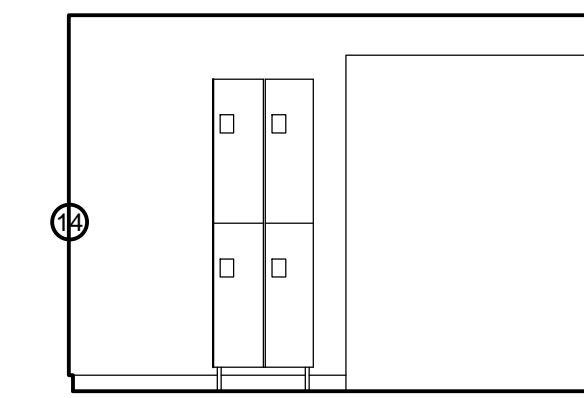
3D



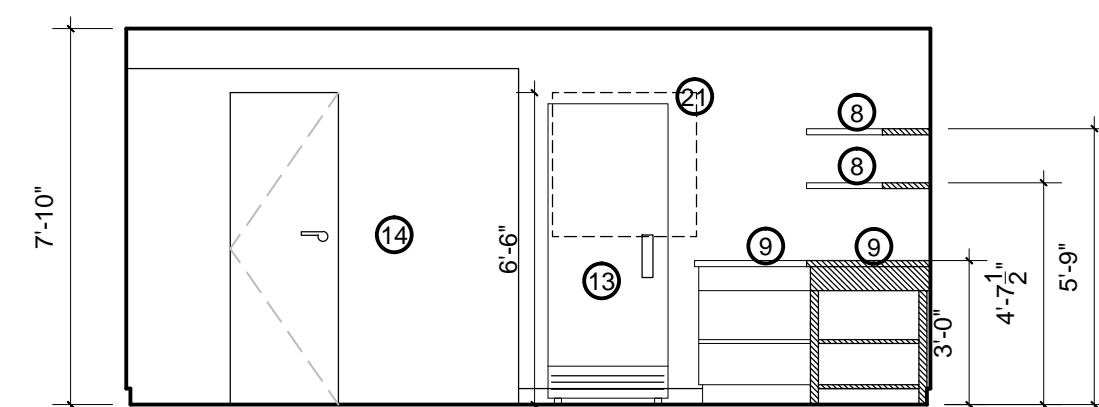
4A. PREP AREA



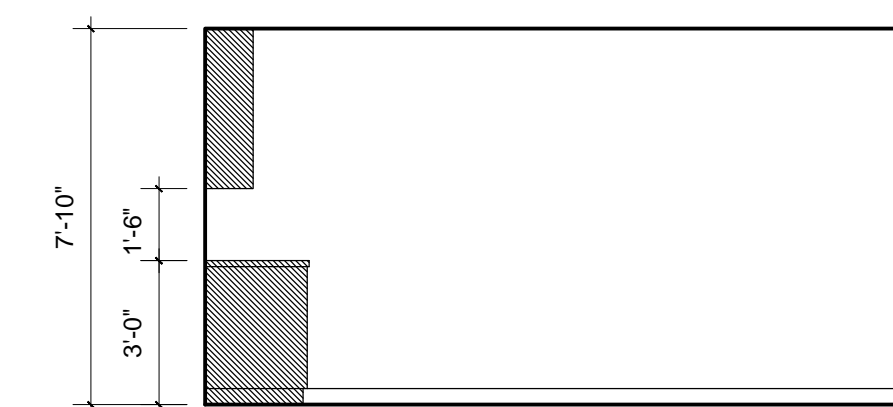
4B



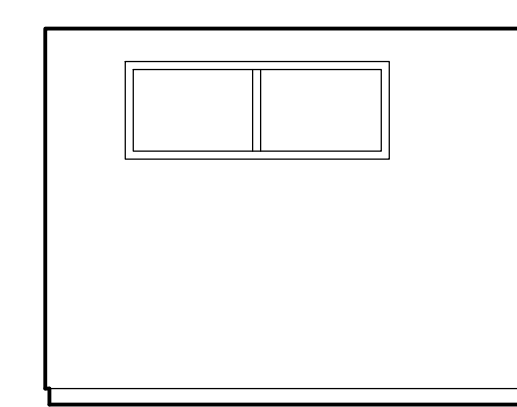
4C



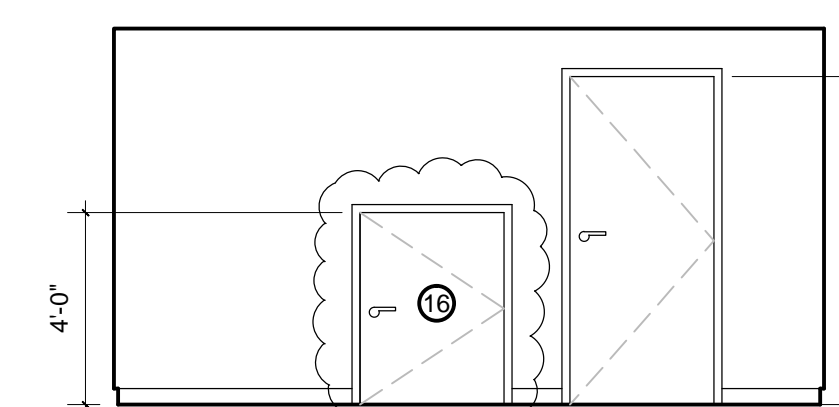
4D



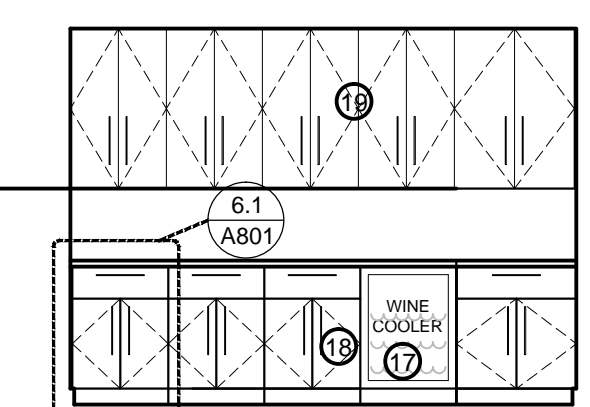
5A. OFFICE



5B



5C



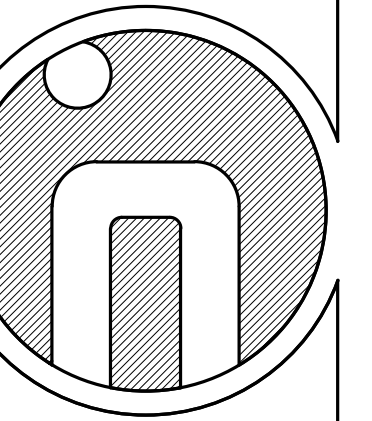
5D

KEY NOTES

- ① BANQUETTE
- ② METAL TALL TABLES. SEE DETAILS SHEET A801
- ③ FLAT SCREEN TV
- ④ METAL BAR TOP. SEE DETAILS SHEET A801
- ⑤ METAL SHELF
- ⑥ MIRROR
- ⑦ TOWEL DISPENSER
- ⑧ STAINLESS STEEL SHELVES
- ⑨ STAINLESS STEEL TABLE
- ⑩ THREE COMPARTMENT SINK SYSTEM
- ⑪ HAND SINK
- ⑫ ICE MAKER
- ⑬ FREEZER
- ⑭ WALK-IN FRIDGE
- ⑮ LOCKERS
- ⑯ CLOSET WITH LOCK DOOR
- ⑰ WINE COOLER
- ⑱ BASE CABINETS. PARTICLE BOARD WITH NEVAMAR PLAM BLACK S6001T ON TOP, BACK AND ALL EDGES. COUNTERTOP: LAMINATED PLYWOOD WITH NEVAMAR PLAM BLACK S6001T ON TOP. EXPOSED PLYWOOD EDGE ON COUNTER TOPS TO BE 1 1/2" TOTAL THICKNESS.
- ⑲ WALL CABINETS. PARTICLE BOARD WITH NEVAMAR PLAM BLACK S6001T ON TOP, BACK AND ALL EDGES.
- ⑳ LIGHT FIXTURE
- ㉑ WOOD DOOR TO ACCESS TO CRAWL SPACE. SEE DOOR SCHEDULE

GENERAL NOTES

INSCAPE STUDIO
 1353 U ST. NW
 Washington, DC 20009
 www.inscapestudio.com
 T: 202.332.7222 F: 202.332.7221
 Project Architect: Gregory Kearley



3632 GEORGIA AVENUE, LLC 07.006
 THE BLUE BANANA
 3632 GEORGIA AVE, NW
 WASHINGTON, DC 20010

BID DOCUMENTS

REVISIONS

- 2 07/19/10
- 3 07/30/10

SEAL

SCALE

1/4" = 1'-0"

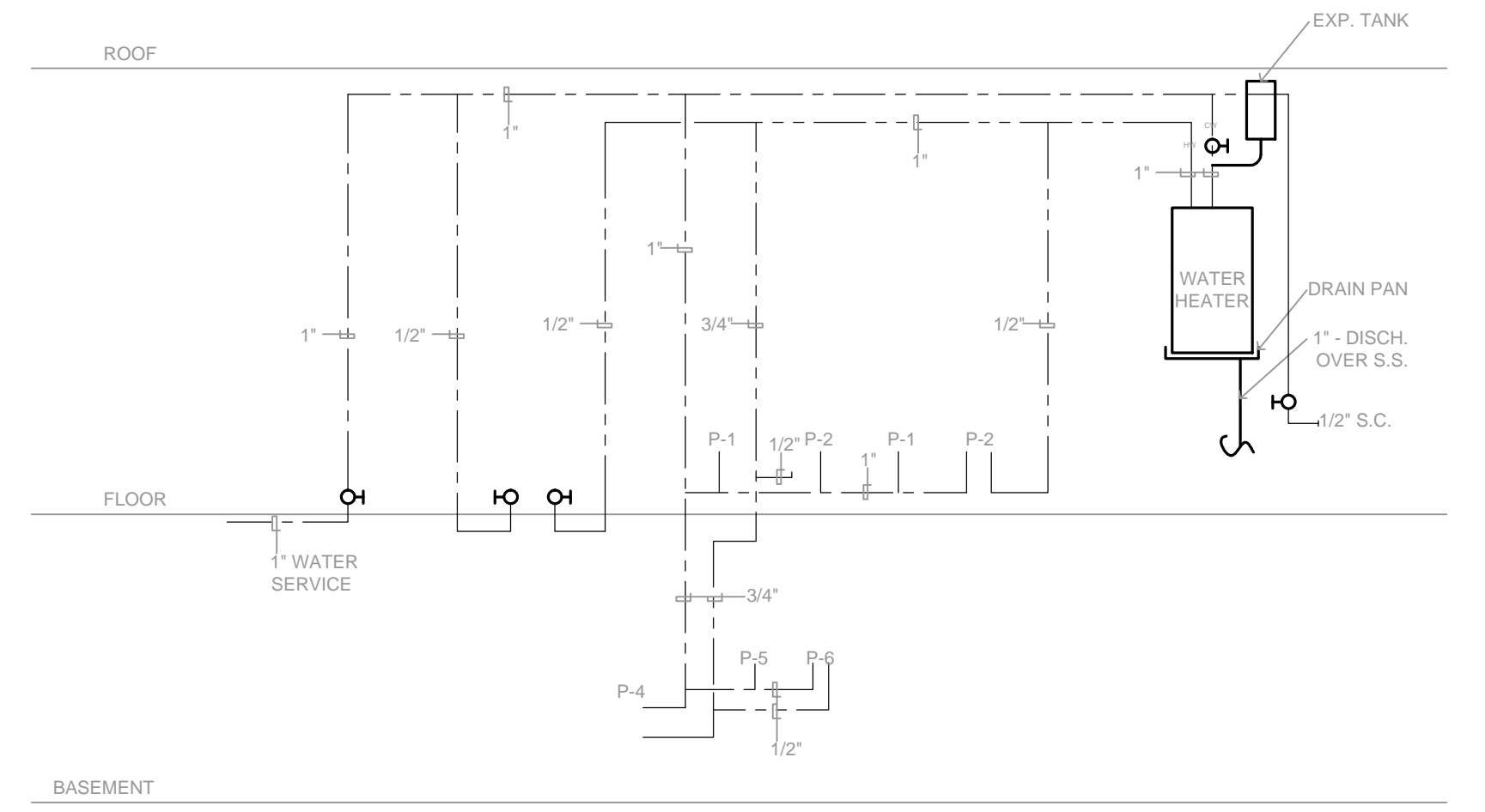
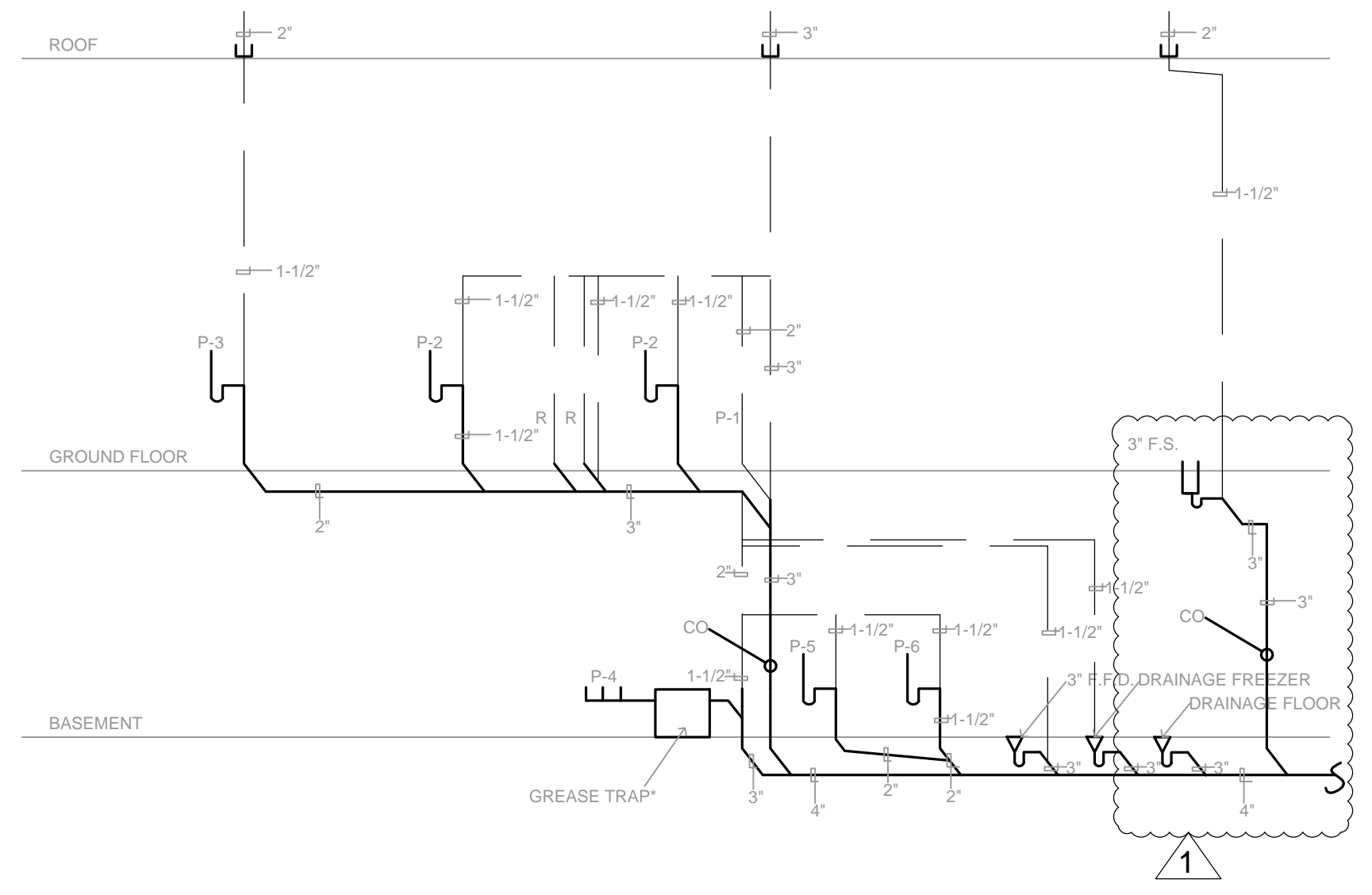
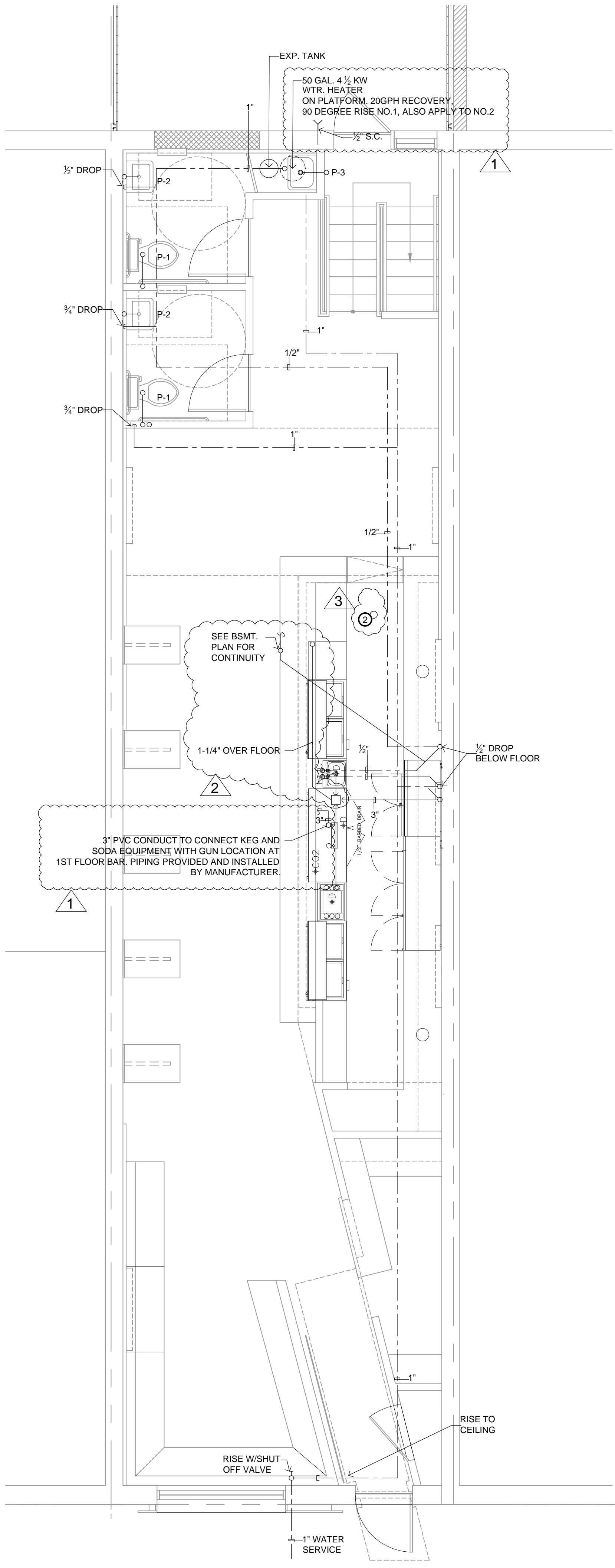
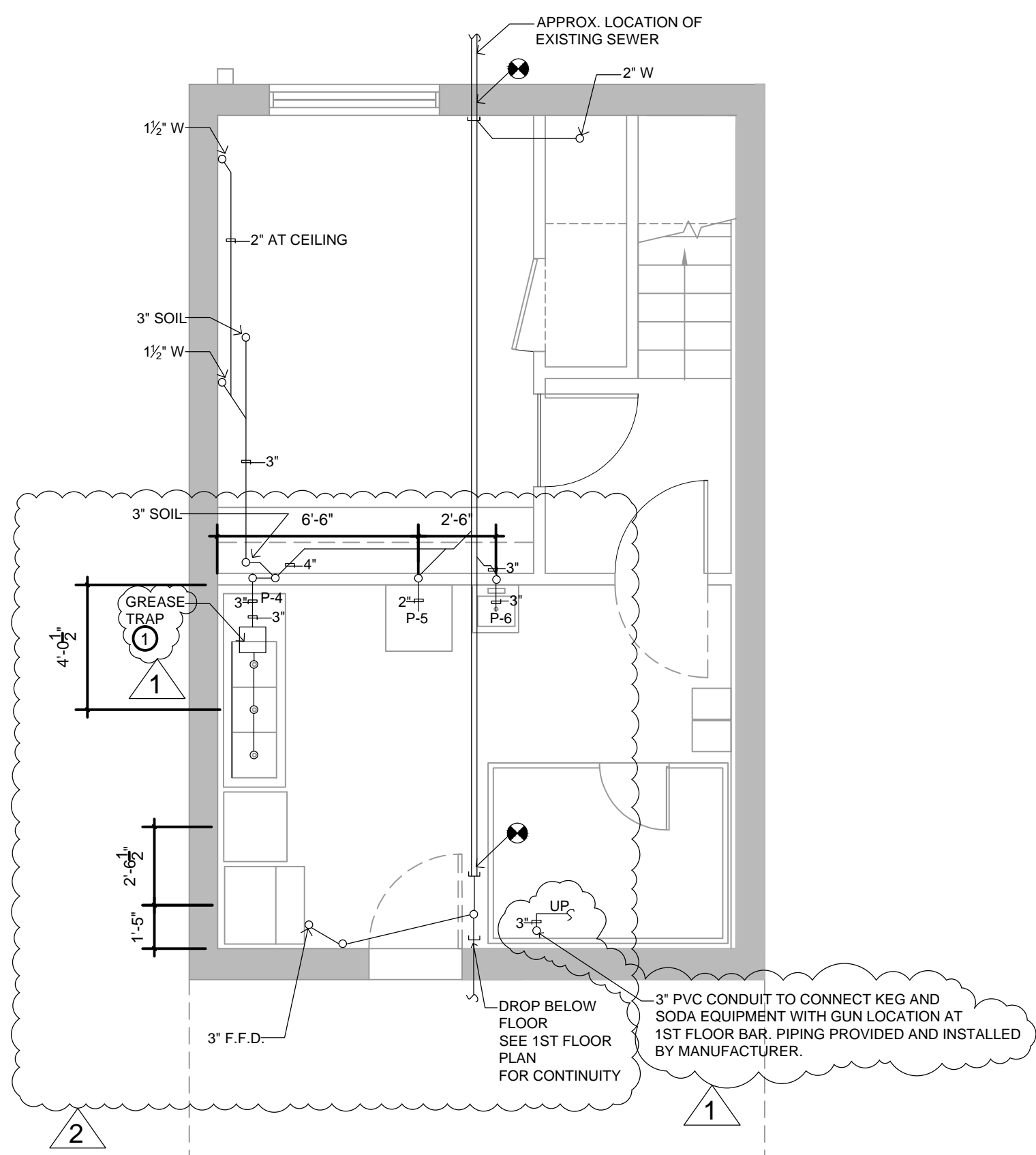
15 FEB 10

ISSUE

INTERIOR ELEVATIONS

A502

SHEET NO.



PLUMBING FIXTURE SCHEDULE						
NO	FIXTURE	W	V	CW	HW	REMARKS
P-1	WATER CLOSET	3"	1-1/2"	1/2"	-	PRESSURE ASSIST FLUSH TANK
P-2	LAVATORY	1-1/2"	1-1/2"	1/2"	1/2"	
P-3	SERVICE SINK	2"	1-1/2"	1/2"	1/2"	
P-4	3 COMP. SINK	-	1-1/2"	1/2"	1/2"	WASTE TO GREASE TRAP
P-5	DISHWASHER	2"	1-1/2"	1/2"	1/2"	
P-6	HAND SINK	1-1/2"	1-1/2"	1/2"	1/2"	

KEY NOTES

① GREASE TRAP CALCULATIONS:
 3x18"x16"x11"=9504 CU.IN. / 231GAL/CU.IN.
 =41 GALS WITH 2 MIN. FLOW RATE
 USE 25 GPM. 50 LB GREASE TRAP

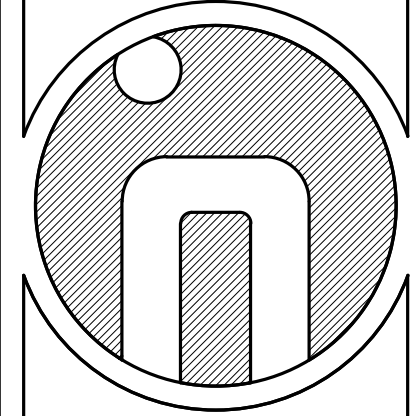
② DRAIN AT FLOOR TO BE CONNECTED TO REST OF THE PLUMBING SYSTEM

GENERAL NOTES

SYMBOLS

--- COLD WATER
 - - - - - HOT WATER
 --- VENT
 --- SOIL OR WASTE
 ○ SHUT OFF VALVE
 --- EXISTING PIPE
 ● POINT OF CONNECTION NEW TO EXISTING

INSCAPE STUDIO
 1353 U ST. NW
 Washington, DC 20009
 www.inscapestudio.com
 T: 202.332.7222 F: 202.332.7221
 Project Architect: Gregory Kearley



3632 GEORGIA AVENUE, LLC 07.006
 THE BLUE BANANA
 3632 GEORGIA AVE, NW
 WASHINGTON, DC 20010

BID DOCUMENTS

REVISIONS

1	02/24/10
2	07/19/10
3	07/30/10

SCALE
 3/16" = 1'-0"

15 FEB 10

SHEET NAME
PLUMBING PLANS

P101
 SHEET NO.

BASEMENT

GROUND FLOOR

SCHEDULE